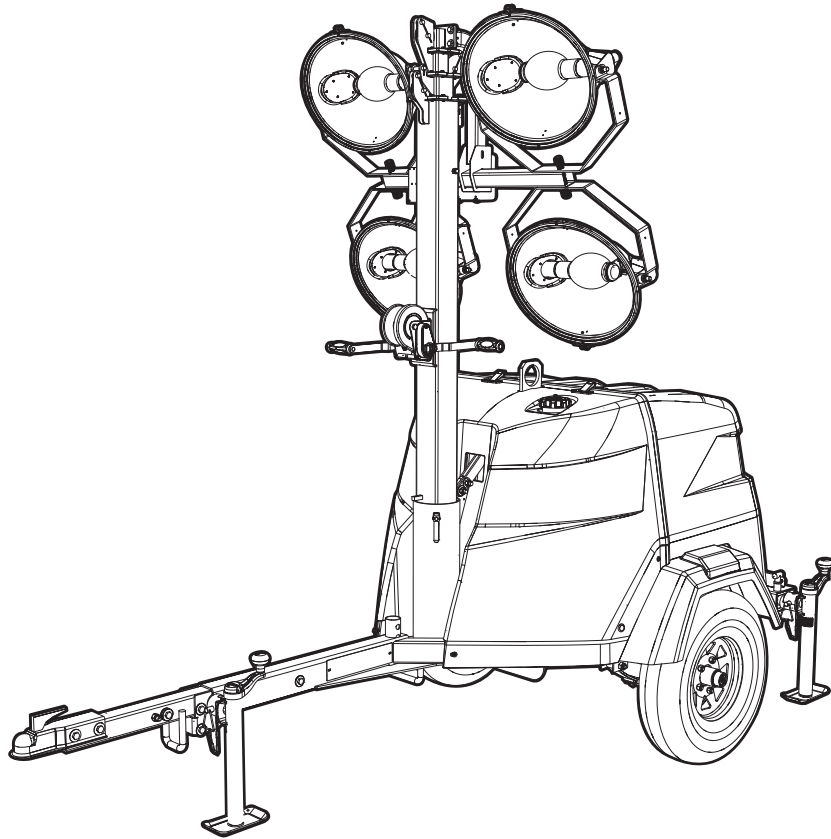


MLT6SM & MLT6SK

Light Tower Parts Manual



02449

MODEL NUMBER: _____

SERIAL NUMBER: _____

DATE PURCHASED: _____

SAVE THIS MANUAL FOR FUTURE REFERENCE

 **WARNING**

Operating, servicing and maintaining this equipment can expose you to chemicals including engine exhaust, carbon monoxide, phthalates, and lead, which are known to the State of California to cause cancer and birth defects or other reproductive harm. To minimize exposure, avoid breathing exhaust, do not idle the engine except as necessary, service your equipment in a well-ventilated area and wear gloves or wash your hands frequently when servicing your equipment. For more information go to www.P65Warnings.ca.gov. (000393)

 **WARNING**

Breathing diesel engine exhaust exposes you to chemicals known to the State of California to cause cancer and birth defects or other reproductive harm.

- Always start and operate the engine in a well-ventilated area.
- If in an enclosed area, vent the exhaust to the outside.
- Do not modify or tamper with the exhaust system.
- Do not idle the engine except as necessary.

For more information go to www.P65Warnings.ca.gov/diesel. (000394)

 **WARNING**

Environmental Hazard. Always recycle batteries at an official recycling center in accordance with all local laws and regulations. Failure to do so could result in environmental damage, death or serious injury. (000228)

Introduction

This parts manual was prepared based on the information available at the time of publication and is subject to change without notice. Generac Mobile Products reserves the right to change parts at any time. To check whether a revised parts manual is available, contact Generac Mobile Products.

DO NOT MODIFY or use this equipment for any application other than which it was designed for. To keep your equipment fully operational, it is suggested you maintain a stock of commonly used maintenance or service parts. A recommended spare parts list can be found in the back of this manual. To order service parts, please go to www.generacmobileproducts.com or call Generac Mobile Products.



WARNING

Consult Manual. Read and understand manual completely before using product. Failure to completely understand manual and product could result in death or serious injury. (000100a)

GENERAC MOBILE PRODUCTS LLC

215 Power Drive • Berlin, WI 54923 U.S.A.

Phone: 920-361-4442

FAX: 920-361-4416

Toll Free: 1-800-926-9768

www.generacmobileproducts.com

For technical or parts QUESTIONS, contact Generac Mobile Products Technical Service at 1-800-926-9768.

Engine Make: _____

Engine Serial Number: _____

Engine Model Number: _____

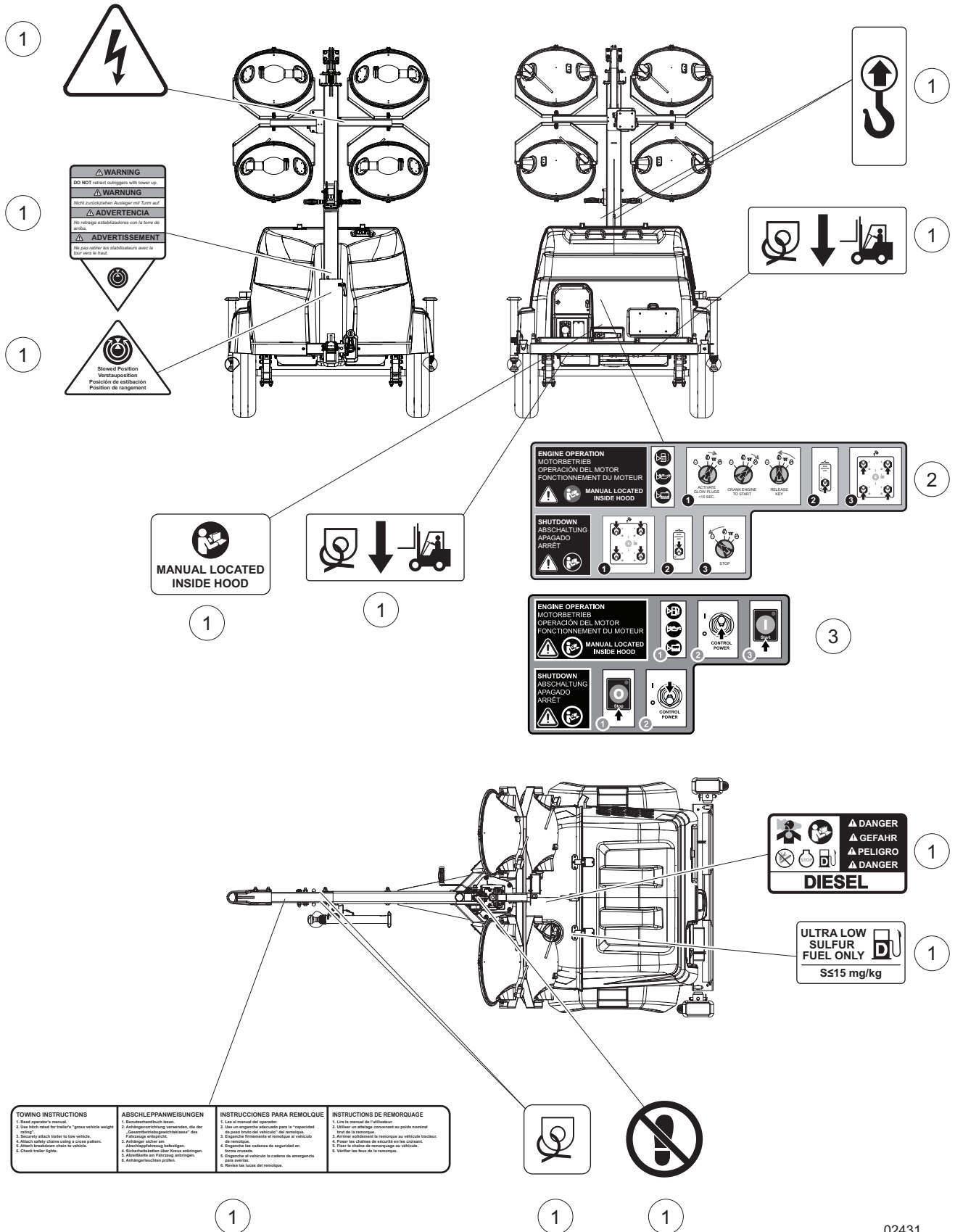
This Page Intentionally Left Blank

Table of Contents

Introduction	iii
Parts Manual Instructions	1
Unit Decals - Front, Rear and Top.....	2
Unit Decals - Left and Right Sides.....	4
Unit Decals - Inside Unit.....	6
Mast, Junction Box and Lights to Unit	8
Light Assembly	10
Mast Junction Box Assembly - Hard Wired Lights.....	12
Mast Assembly	14
Mast Assembly - Bottom Post - Manual Winch	16
Mast Assembly - Bottom Post - Electric Winch	18
Enclosure Assembly (1 of 2).....	20
Enclosure Assembly (2 of 2).....	22
Control Box Assembly	24
Control Box Assembly - MLT6S Powerzone Option (1 of 2)	26
Control Box Assembly - MLT6S Powerzone Option (2 of 2)	28
Cooling System Assembly	30
Engine Assembly - Mitsubishi (1 of 2)	32
Engine Assembly - Mitsubishi (2 of 2)	34
Engine Assembly - Kubota (1 of 2).....	36
Engine Assembly - Kubota (2 of 2).....	38
Generator Assembly	40
Components to Trailer Assembly	42
Trailer Assembly.....	44
Recommended Spare Parts - Engine and Service Kits - Mitsubishi.....	46
Recommended Spare Parts - Engine and Service Kits - Kubota	48
Recommended Spare Parts - Electrical	50
Recommended Spare Parts - Misc.....	52

This Page Intentionally Left Blank

UNIT DECALS - FRONT, REAR AND TOP



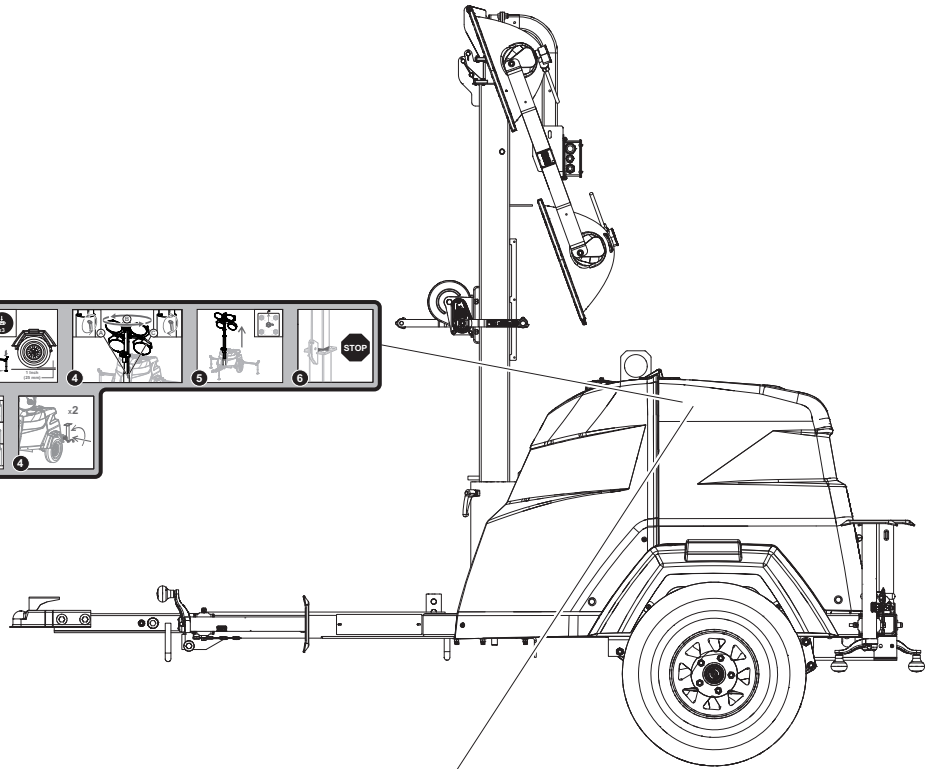
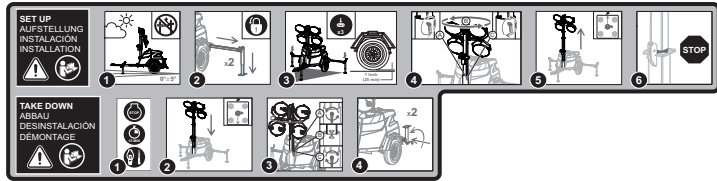
02431

UNIT DECALS - FRONT, REAR AND TOP

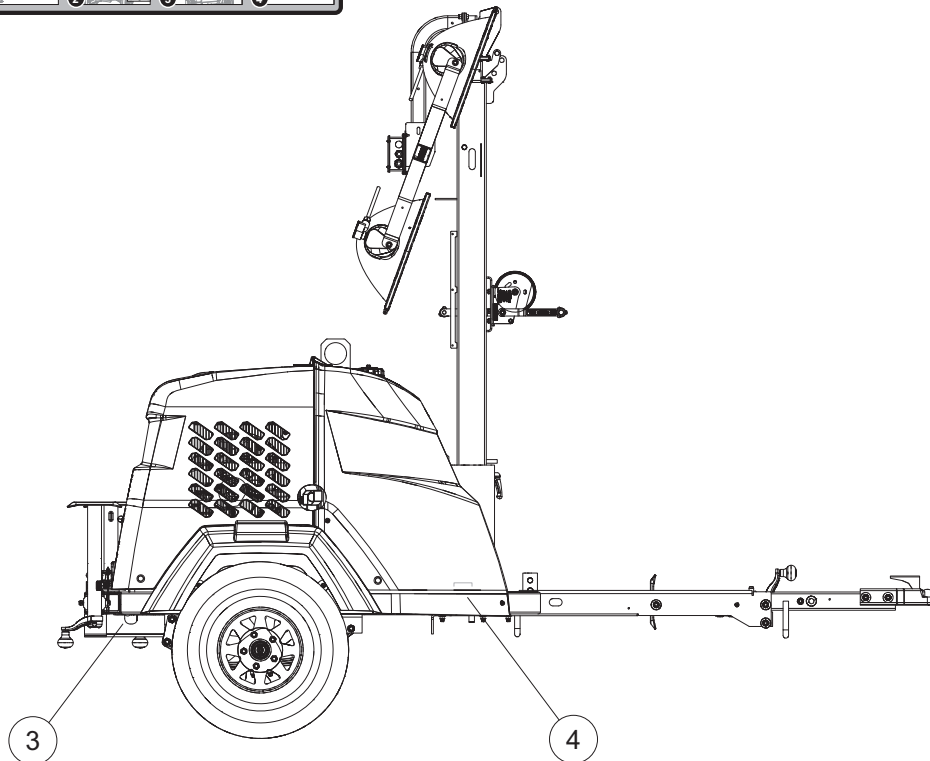
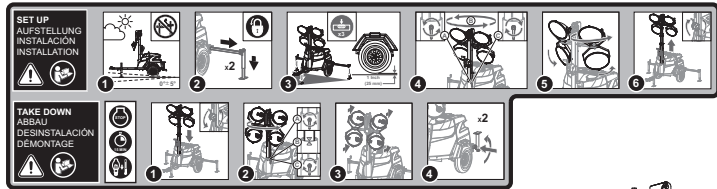
Item	Part No.	Qty	Description	Notes
1	17979	1	Decal, safety MLT6/8S	
2	17980	1	Decal, operation MLT6/8S (manual)	
3	76916	1	Decal, operation PZ	Powerzone only

UNIT DECALS - LEFT AND RIGHT SIDES

1



2

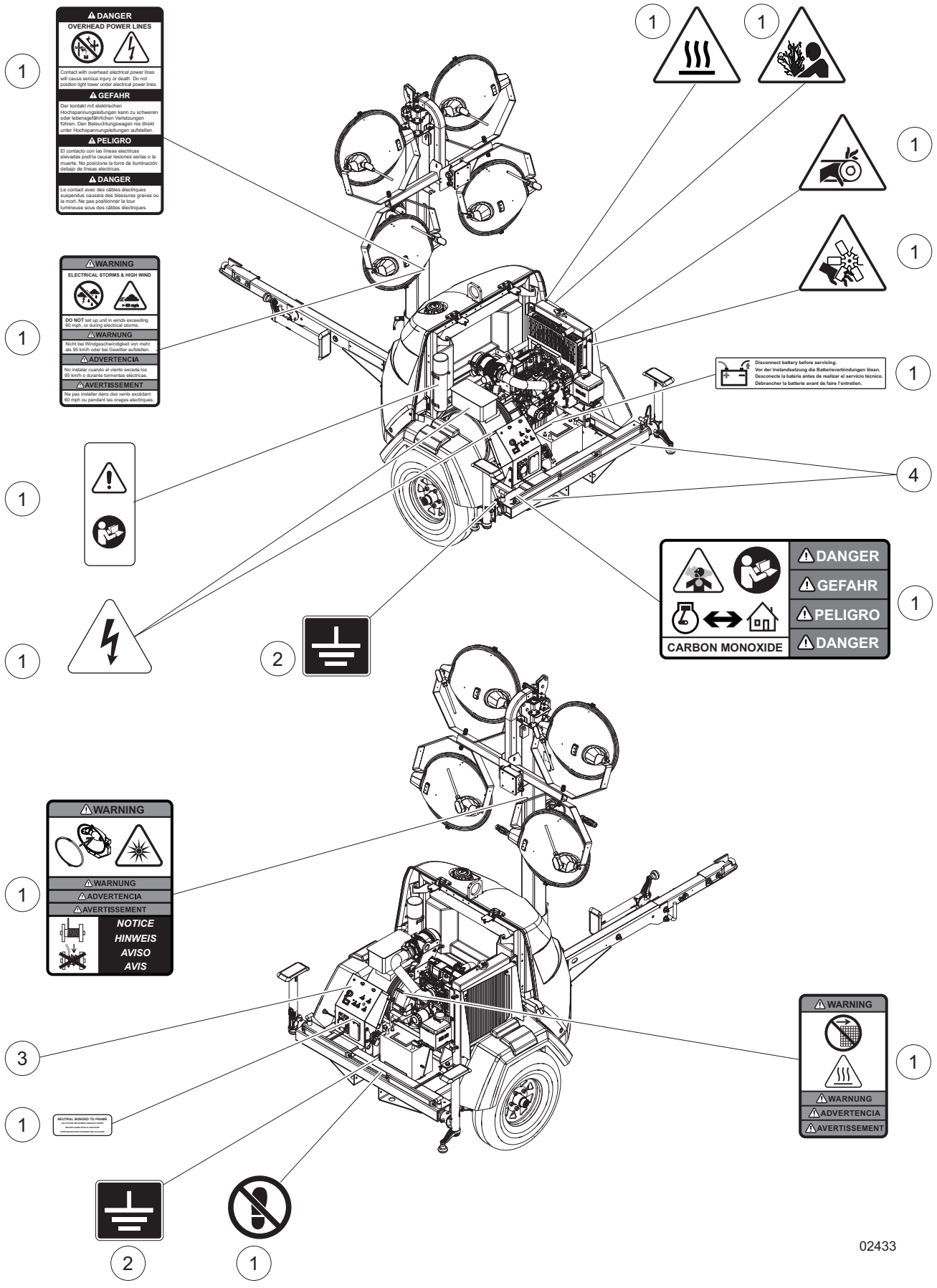


02432

UNIT DECALS - LEFT AND RIGHT SIDES

Item	Part No.	Qty	Description	Notes
1	70096	1	Decal, operation MLT6/8S (electric)	
2	17980	1	Decal, operation MLT6/8S (manual)	
3	72149	1	Reflector, red (4.25 in x .75 in)	Set of two
4	72150	1	Reflector, yellow (4.25 in x .75 in)	Set of two

UNIT DECALS - INSIDE UNIT

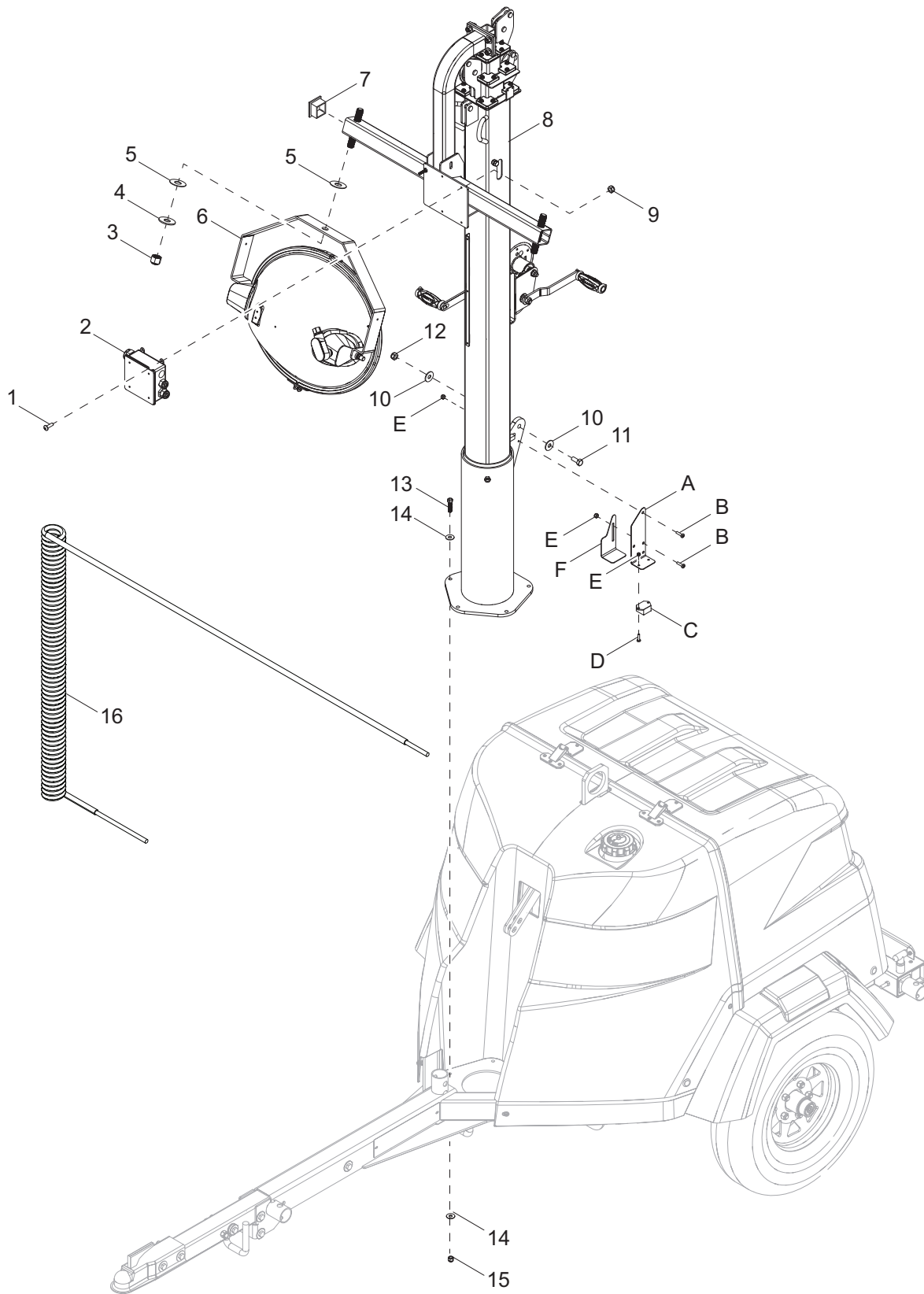


02433

UNIT DECALS - INSIDE UNIT

Item	Part No.	Qty	Description	Notes
1	17979	1	Decal, safety MLT6/8S	
2	12142	1	Decal, ground	
3	17986	1	Decal, control panel MLT 6SK-M	
--	70196	1	Decal, control panel - PZ	Powerzone only
4	72132	1	Reflector, rear 2.0 x 2.0 - red	Set of two

MAST, JUNCTION BOX AND LIGHTS TO UNIT



02434

MAST, JUNCTION BOX AND LIGHTS TO UNIT

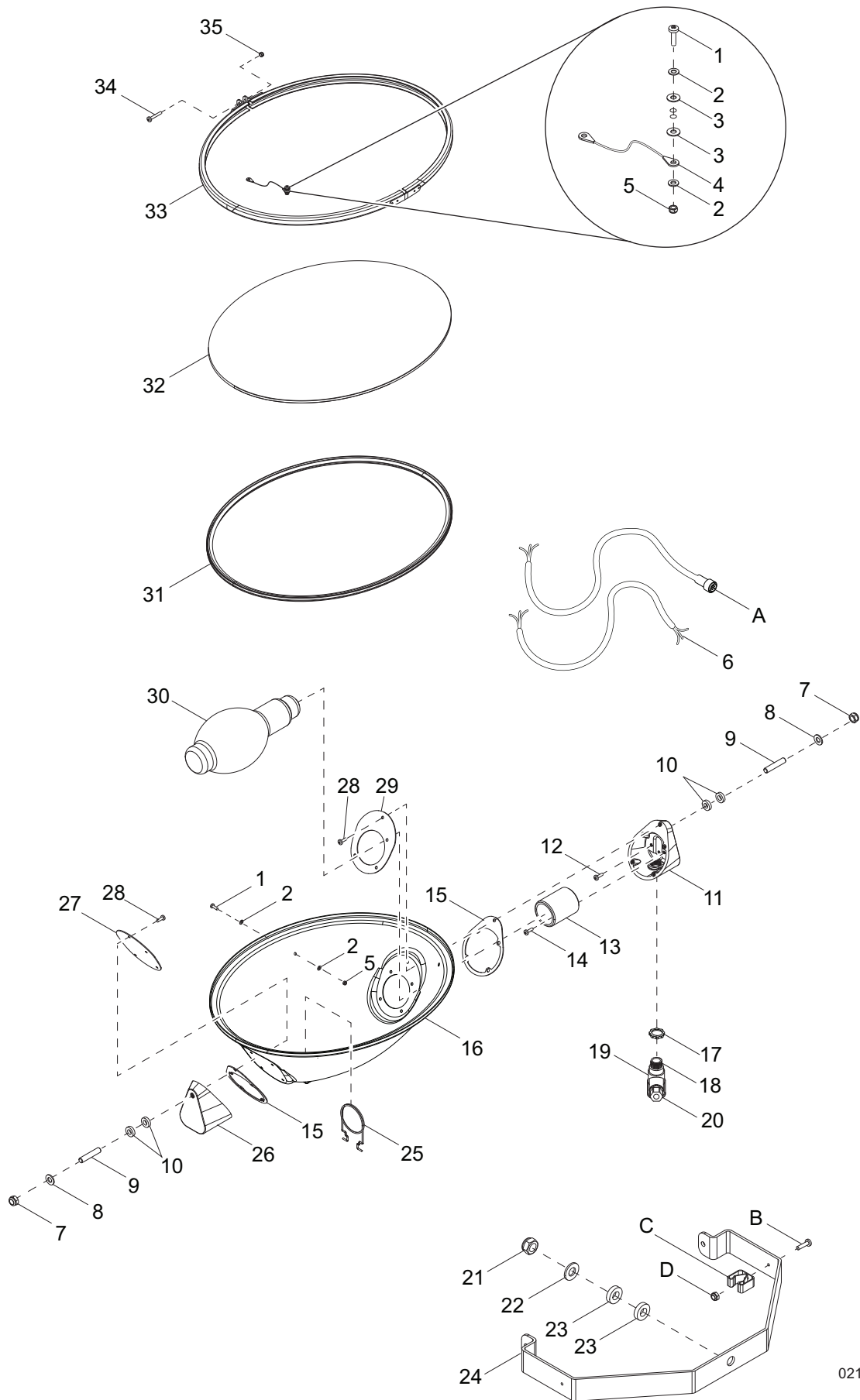
Item	Part No.	Qty	Description	Notes
1	60062	4	Screw, 10-32 x .750 pan Phillips, G2	
2	31250SRV	1	Assembly, mast box	
3	60584	4	Nut, .750-10 nylock, G5	
4	60247	4	Washer, .750 flat 2.020/.130	
5	63357	8	Washer, .750 flat 2.0/.062 - plastic	
6	10000008620	4	Assembly, light fixture 1050W MH	
7	31254	4	Plug, 2.0 square x .125 wall tube, plastic	
8	10000018877	1	Assembly, mast - manual winch, NAP	
9	60415	4	Nut, 10-32 nylock, SS	
10	60309	4	Washer, .500 flat 1.060/.090	
11	60484	2	Screw, .500-13 x 2.0 standard hex, G5	
12	62221	2	Nut, .500-13 nylock, G5	
13	60139	5	Screw, .375-16 x 1.50 hex, G5	
14	60386	10	Washer, .375 flat .993/.064	
15	60358	5	Nut, .375-16 nylock, G5	
16	39650	1	Coil cord w/connector	

OPTIONAL FEATURES

Night Watchman

A	70208B	1	Bracket, night watchman	
B	60488	4	Screw, 8-32 x .750 pan Phillips, G2	
C	68763	1	Assembly, night watchman	
D	62054	2	Screw, 8-32 x .500 Pan Phillips 18-8, SS	
E	60270	8	Nut, 8-32 nylock	
F	56610B	1	Cover, dusk to dawn sensor	

LIGHT ASSEMBLY



02114

LIGHT ASSEMBLY - OVAL

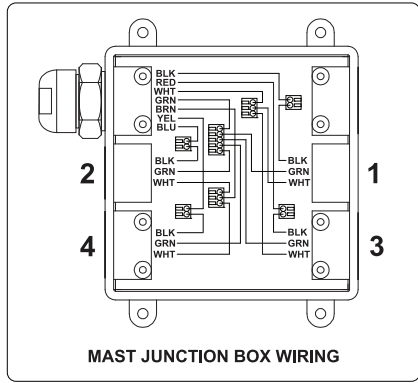
Item	Part No.	Qty	Description	Notes
1	13399	2	Screw, M4 x 18 pan Phillips	
2	60067	4	Washer, #10 flat .435/.060, SS	
3	13372	2	Washer, #4 nylon	
4	13370	1	Assembly, tether	
5	60051	2	Nut, M4-.70 nylock, G8.8	
6	13438	1	Cord, power hard wired	
7	62221	2	Nut, .500-13 nylock, G5	
8	60309	2	Washer, .500 flat 1.060/.090	
9	13392	2	Stud, trunnion	
10	13390	4	Washer, .500 nylon	
11	13375	1	Support, housing/trunnion w/cord	
12	13393	1	Screw, M5 x 12 Phillips green	
13	13381	1	Socket, bulb	
14	60694	2	Screw, 8-32 x .750 pan Phillips, SS	
15	13378	2	Gasket, silicone	
16	13366	1	Housing	
17	15861	1	Nut, special, .500NPT lock	
18	13386	1	Fitting, nipple - .500	
19	13387	1	Connector, weather tight	
20	15864	1	Strain relief, .500NPT watertight, .270/.464 ID	
21	60584	1	Nut, .750-10 nylock, G5	
22	60247	1	Washer, .750 flat 2.020/.130	
23	63357	2	Washer, .750 flat 2.0/.062, plastic	
24	13368	1	Trunnion	
25	13892	1	Support, bulb	
26	13374	1	Support, housing/trunnion w/out cord	
27	13377	1	Bracket, end plate	
28	13388	10	Screw, M5x12 slotted hex w/flange	
29	13376	1	Bracket, socket end plate	
30	10000008611	1	Bulb, metal halide 1050W	
31	13373	1	Gasket, lens oval	
32	13369	1	Lens, glass oval	
33	13367	1	Assembly, aluminum ring	
34	60167	1	Screw, M5-.80 x 35 pan Phillips, G4.8	
35	60038	1	Nut, M5-.80 nylock	
--	10000008620	4	Assembly, light fixture - 1050W non-quick disc. - oval	Items 1-35

OPTIONAL FEATURES

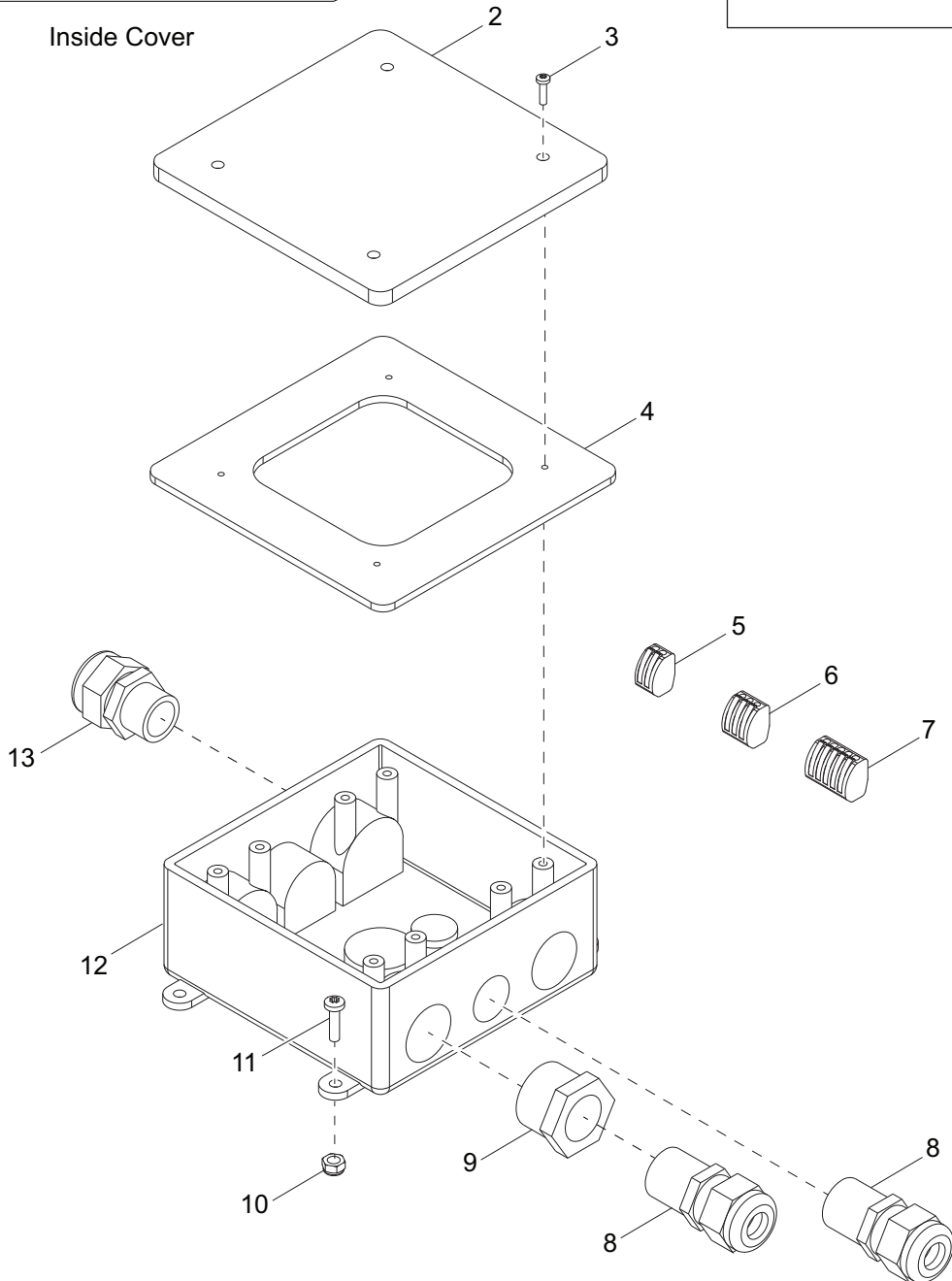
Quick Disconnect:

A	13383	1	Cord, power quick disconnect	Replaces item 6
B	60398	1	Screw, 10-32 x .500 pan Phillips, SS	
C	19041	1	Clip, spring holder	
D	60061	1	Nut, 10-32 nylock, G5	
--	1000008612	4	Assembly, light fixture/QD cord clip	

MAST JUNCTION BOX ASSEMBLY - HARD WIRED LIGHTS



Inside Cover

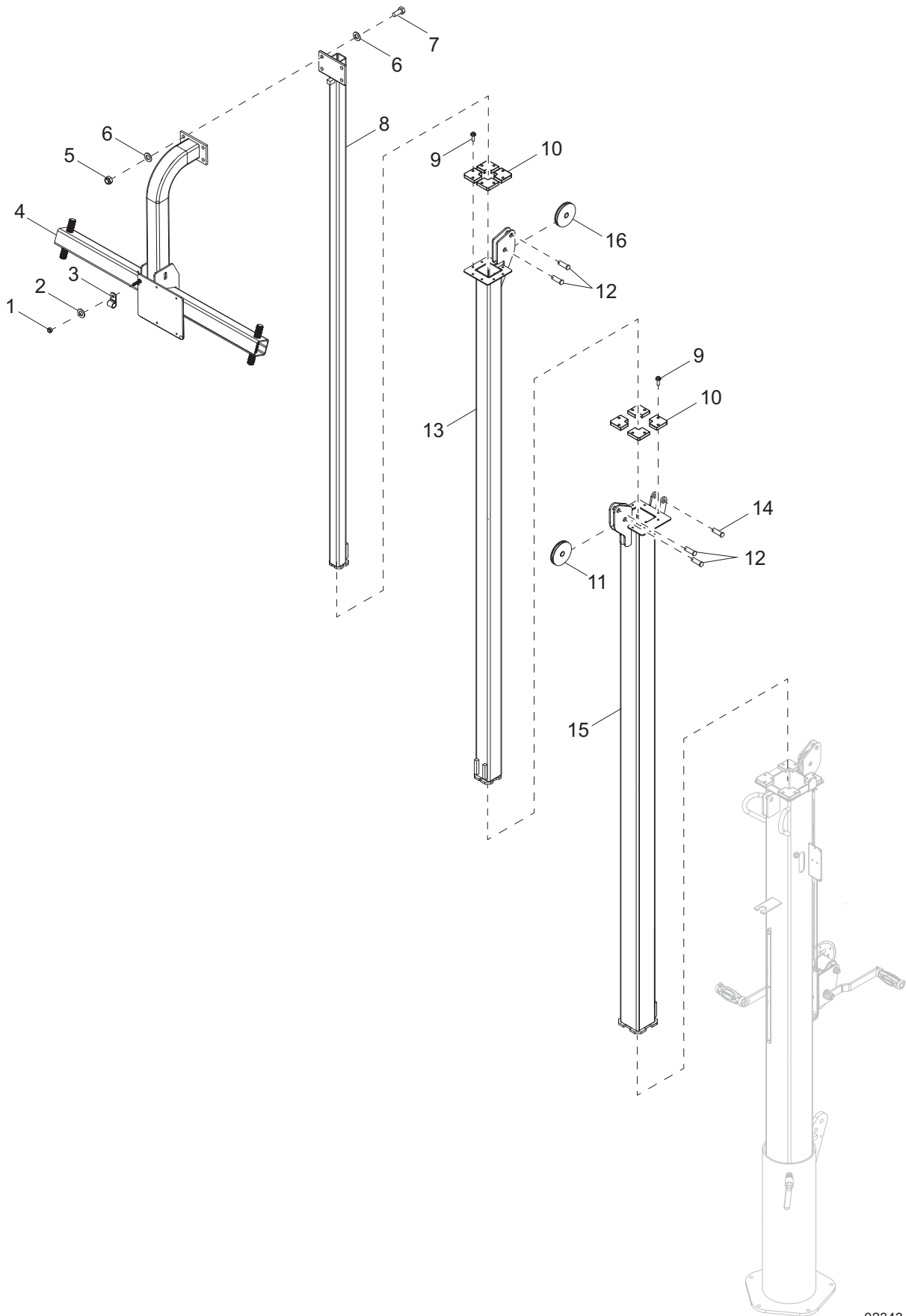


02132

MAST JUNCTION BOX ASSEMBLY - HARD WIRED LIGHTS

Item	Part No.	Qty	Description	Notes
1	37215	1	Decal, mast junction box wiring	
2	12109	1	Cover, box, 2-gang plastic	
3	60424	4	Screw, 6-32 x .750 pan Phillips, G2	
4	13749SRV	1	Gasket, junction box - HFI 281000	
5	66100	4	Connector, 2 position.	
6	66101	2	Connector, 3 position.	
7	66102	1	Connector, 5 position.	
8	60755	2	Fitting, strt .750MNPT x .500FNPT, nylon	
9	15864	4	Strain relief, .500NPT water tight	
10	60415	4	Nut, 10-32 nylock, SS	
11	60062	4	Screw, 10-32 x .750 pan Phillips, G2	
12	12094	1	Box, junction	
13	14656	1	Strain relief, .750NPT water tight	
14	31250SRV	1	Assembly, mast junction box	

MAST ASSEMBLY

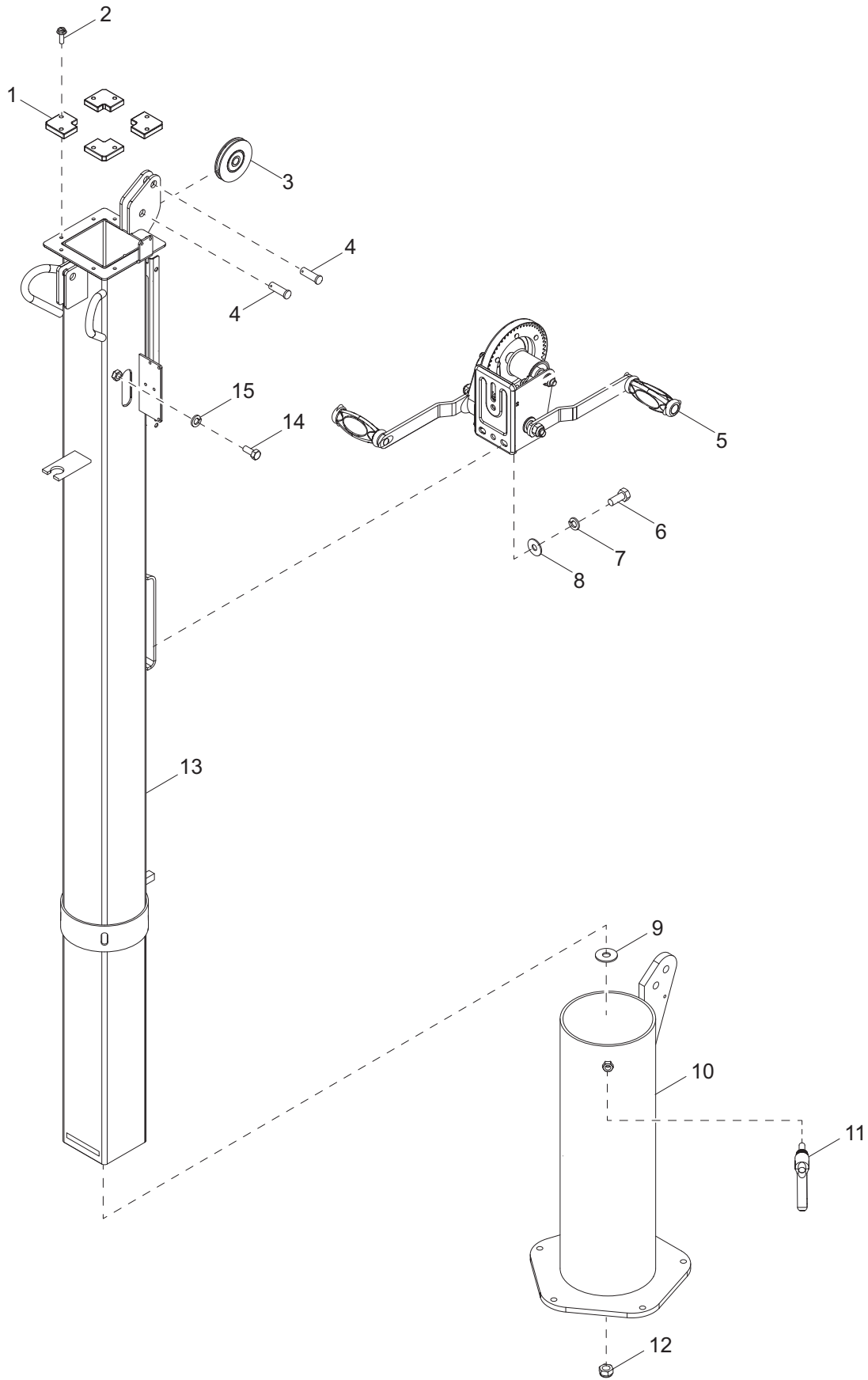


02343

MAST ASSEMBLY

Item	Part No.	Qty	Description	Notes
1	60144	1	Nut, .250-20 nylock, G5	
2	60243	1	Washer, .250 flat .735/.060	
3	16143	1	Clamp, tubing .500	
4	43201B	1	Weldment, mast, crossbar	
5	60358	4	Nut, .375-16 nylock, G5	
6	60386	8	Washer, .375 flat .993/.064	
7	60352	4	Screw, .375-16 x 1.250 hex, G5	
8	31264B	1	Weldment, mast - 1.50	
9	63358	16	Screw, .250-20 x .625 hex wash hd	
10	31225	8	Guide	
11	33736	1	Assembly, pulley - vertical mast	
12	63325	4	Pin, clevis .500 diameter x 1.063 UL	
13	31261B	1	Weldment, mast - 2.25	
14	35655	1	Pin, clevis .500 diameter x 1.750 ZP	
15	37465B	1	Weldment, mast - 3.0	
16	14262	1	Sheave, 3.00	
--	31247	1	Cable, .188 x 144 w/ ball swedge	winch cable
--	31248	2	Cable, .188 x 79.75 w/ball swedge	middle cable
--	31277	1	Cable, .188 x 78.0 w/ball swedge	top cable

MAST ASSEMBLY - BOTTOM POST - MANUAL WINCH

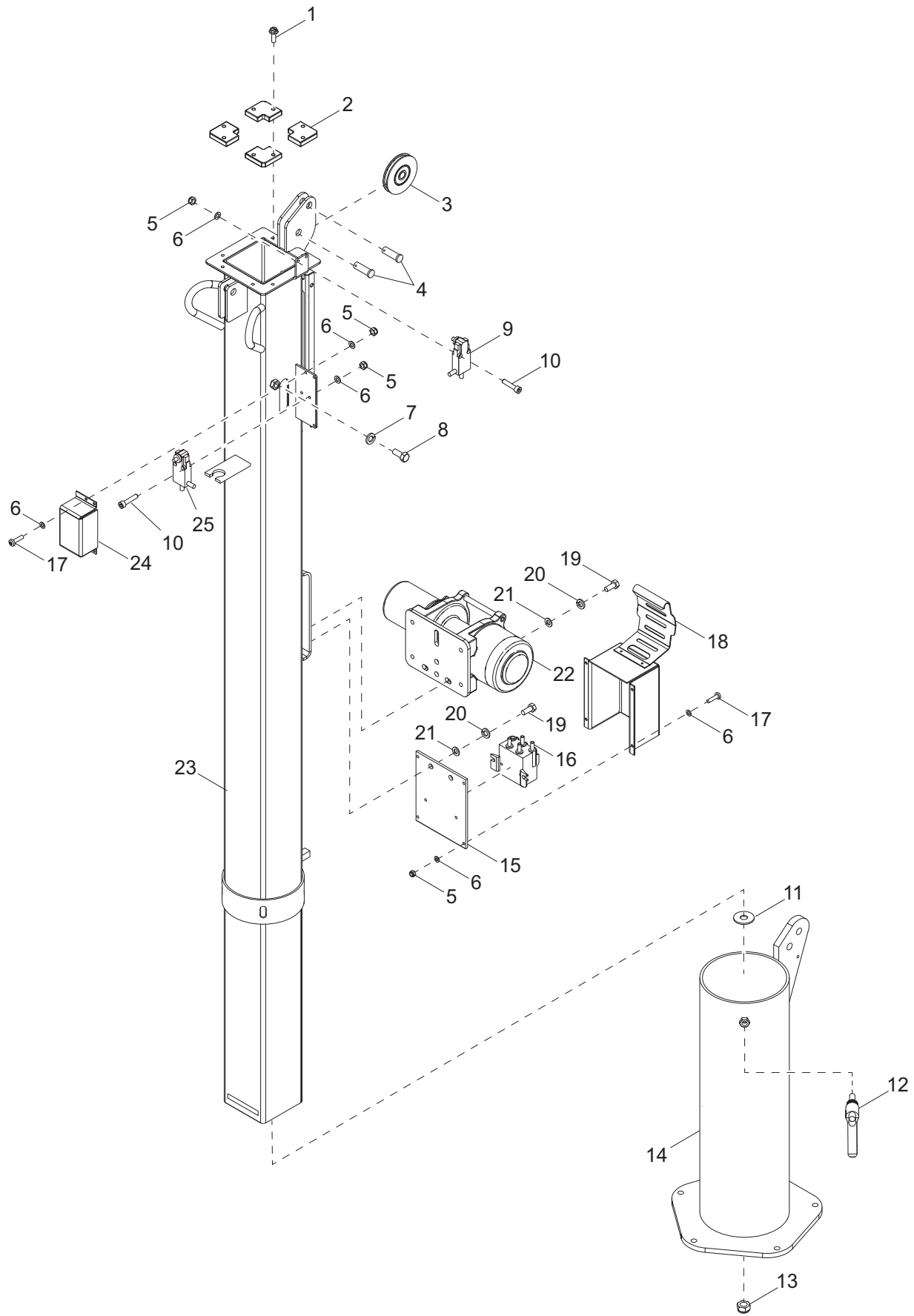


02344

MAST ASSEMBLY - BOTTOM POST - MANUAL WINCH

Item	Part No.	Qty	Description	Notes
1	31225	4	Guide	
2	63358	8	Screw, .250-20 x .625 hex washer head	
3	33736	1	Assembly, pulley vertical mast	
4	63325	2	Pin, clevis .500 diameter x 1.063 UL	
5	72127	1	Winch, manual - 1500 lb, dual handle	
6	60205	3	Screw, .375-16 x 1.0 hex, G5	
7	60206	3	Washer, .375 split lock - hardened	
8	60386	3	Washer, .375 flat .993/.064	
9	60247	1	Washer, .750 flat 2.020/.130	
10	31218B	1	Weldment, mast rotation tube	
11	36978	1	Handle, .375-16 x 1.0 adjustable	
12	60584	1	Nut, .750-10 nylock, G5	
13	37462B	1	Weldment, mast 4.0 in	
14	62269	2	Screw, .375-16 x .75 hex, SS - red	
15	60703	2	Washer, .375 split lock, SS	

MAST ASSEMBLY - BOTTOM POST - ELECTRIC WINCH

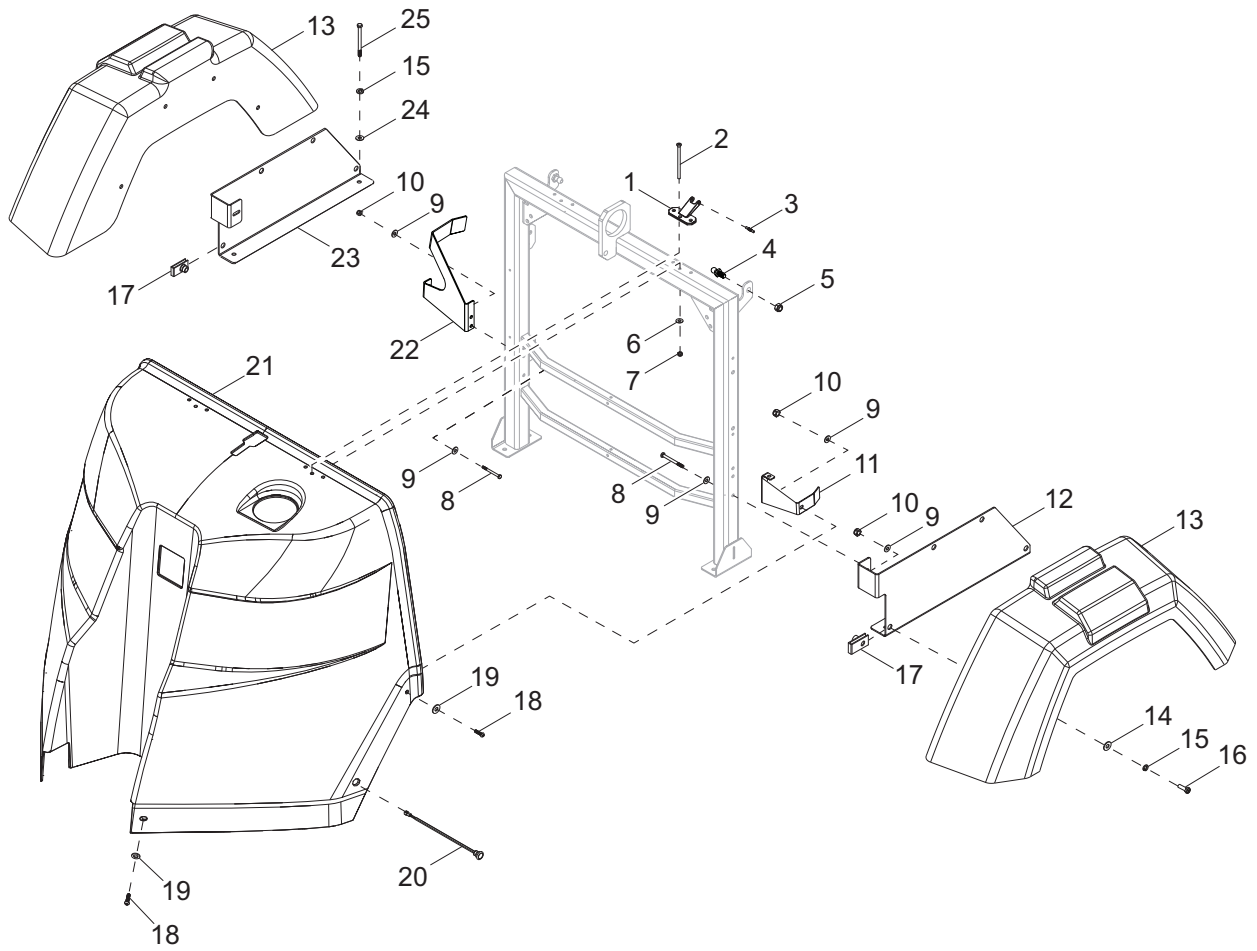


02341

MAST ASSEMBLY - BOTTOM POST - ELECTRIC WINCH

Item	Part No.	Qty	Description	Notes
1	63358	8	Screw, .250-20 x .625 hex washer head	
2	31225	4	Guide	
3	33736	1	Assembly, pulley vertical mast	
4	63325	2	Pin, clevis .500 diameter x 1.063 UL	
5	60207	11	Nut, 8-32 nylock, G6	
6	60269	18	Washer, #8 flat .433/.036	
7	60703	2	Washer, .375 split lock, SS	
8	62269	2	Screw, .375-16 x .75 hex, SS - red	
9	31740	1	Assembly, down switch	
10	67190	4	Screw, 8-32 x 1.125 socket head, SS	
11	60247	1	Washer, .750 flat 2.020/.130	
12	36978	1	Handle, .375-16 x 1.0 adjustable	
13	60584	1	Nut, .750-10 nylock, G5	
14	31218B	1	Weldment, mast rotation tube	
15	37207B	1	Plate, contactor	
16	11293	1	Contactor	hardware included
17	60244	7	Screw, 8-32 x .750 pan Phillips, G2	
18	37468B	1	Weldment, winch cover	
19	60205	5	Screw, .375-16 x 1.0 standard hex, G5	
20	60206	5	Washer, .375 split lock	
21	60386	5	Washer, .375 flat .993/.064	
22	12874	1	Winch, electric - 770 lb hoist	
23	37462B	1	Weldment, mast 4.0 in	
24	37205B	1	Cover, up limit switch	
25	31739	1	Assembly, up stop switch	
--	12922	2	Boot, battery cable - red	
--	31742	1	Wire group, electric winch box	
--	31743	1	Harness, winch power cables	

ENCLOSURE ASSEMBLY (1 OF 2)

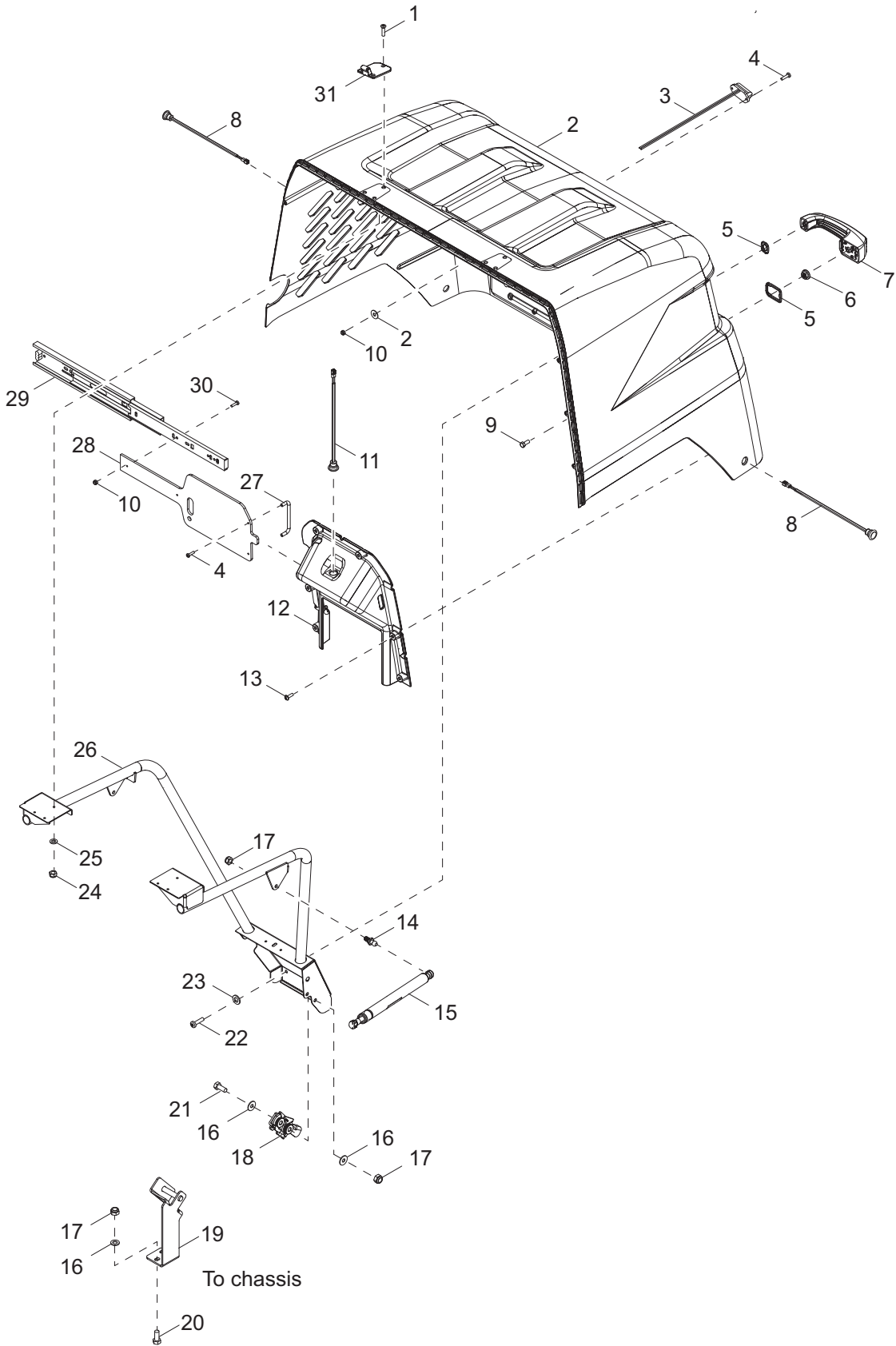


02435

ENCLOSURE ASSEMBLY (1 OF 2)

Item	Part No.	Qty	Description	Notes
1	10000022542	2	Hinge, offset housing leaf - front	
2	35282	6	Screw, 10-24 x 3.0 flat head Phillips, SS	
3	10000022543	2	Pin, offset housing hinge - knurled	
4	35293	2	Ball stud, 10mm, .313-18	
5	60303	2	Nut, .312-18 nylock, G2	
6	60237	12	Washer, #10 flat .495/.036	
7	60457	12	Nut, 10-24 nylock, G2	
8	61234	6	Screw, .250-20 x 2.750 standard hex, G5	
9	60243	12	Washer, .250 flat .735/.060	
10	60144	8	Nut, .250-20 nylock, G5	
11	10000017357	1	Guide bracket, enclosure meeting -LH	
12	35141B	1	Bracket, mounting fender - left	
13	17982	2	Fender, plastic, 13 in. wheel	
14	60386	8	Washer, .375 flat .993/.064	
15	60271	8	Washer, .312 split lock	
16	60028	8	Screw, .312-18 x 1.0 standard hex, G5	
17	62086	8	Nut, .312-18 U-clip - short type	
18	68070	4	Screw, .250-20 x 1.00 button hex, SS	
19	60696	6	Washer, .250 flat .625/.050, SS	
20	36961	2	Assembly, amber side marker light	
21	10000012597	1	Enclosure, front cover	
22	10000017378	1	Guide bracket, enclosure meeting -RH	
23	35216B	2	Bracket, mounting fender - right	
24	60119	6	Washer, .312 flat .875/.070	
25	60404	4	Screw, .312-18 x 1.250 standard hex, G5	

ENCLOSURE ASSEMBLY (2 OF 2)

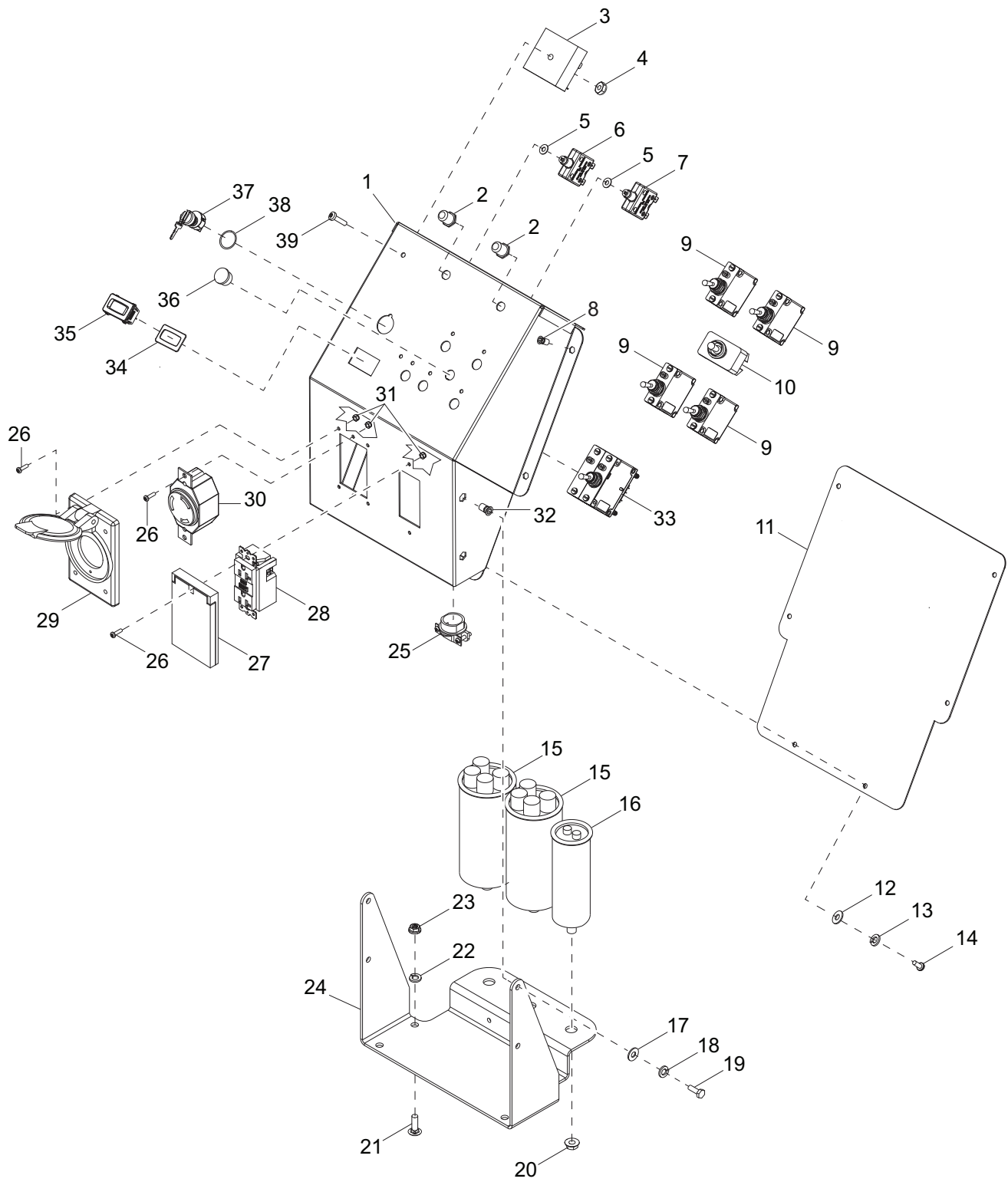


02436

ENCLOSURE ASSEMBLY (2 OF 2)

Item	Part No.	Qty	Description	Notes
1	35290	6	Screw, 10-24 x 1.00 flat Phillips, SS	
2	10000012638	1	Housing, rear textured - orange	
3	36963	1	Assembly, license plate light	
4	60694	4	Screw, 8-32 x .750 pan Phillips, SS	
5	70216	1	Gasket, kit handle, push button	
6	60036	1	Nut, M6-1.00 serrated flange, G8.8	
7	35138	1	Handle, push-button padlock	
8	36962	2	Assembly, red side marker	
9	60335	1	Screw, M6-1.00 x 25 standard hex, SS	
10	60270	4	Nut, 8-32 nylock, class 6	
11	36964	1	Assembly, controls light	
12	10000012596	1	Bezel, control panel textured - black	
13	10000017348	6	Screw, D60-2.14 x 20TRWH	
14	35293	2	Ball stud, 10mm, .313-18	
15	35137	2	Gas shock, 120 lb	
16	60119	6	Washer, .312 flat .875/.070	
17	60303	6	Nut, .312-18 nylock, G2	
18	35139	1	Latch, rotary	
19	37178B	1	Mount, door latch striker	
20	61066	2	Screw, .312-18 x 1.00 carriage square - SS	
21	62001	2	Screw, .312-18 x 1.250 standard hex, G5	
22	60146	3	Screw,	
23	60243	3	Washer, .250 flat .735/.060	
24	60457	6	Nut, 10-24 nylock, G2 ZC	
25	60237	2	Washer, #10 flat .495/.036 ZC	
26	37012B	1	Weldment, enclosure structure	
27	37123	1	Handle, control box cover	
28	10000017623	1	Cover, sliding control panel	
29	36914	1	Slide, control box cover	
30	62054	2	Screw, 8-32 x .500 pan Phillips - SS	
31	10000022523	2	Hinge, leaf offset housing - rear	
--	60335	1	Screw, M6-1.00 x 25 standard hex, SS	
--	60375	1	Clamp, tubing - .312 lt duty	

CONTROL BOX ASSEMBLY

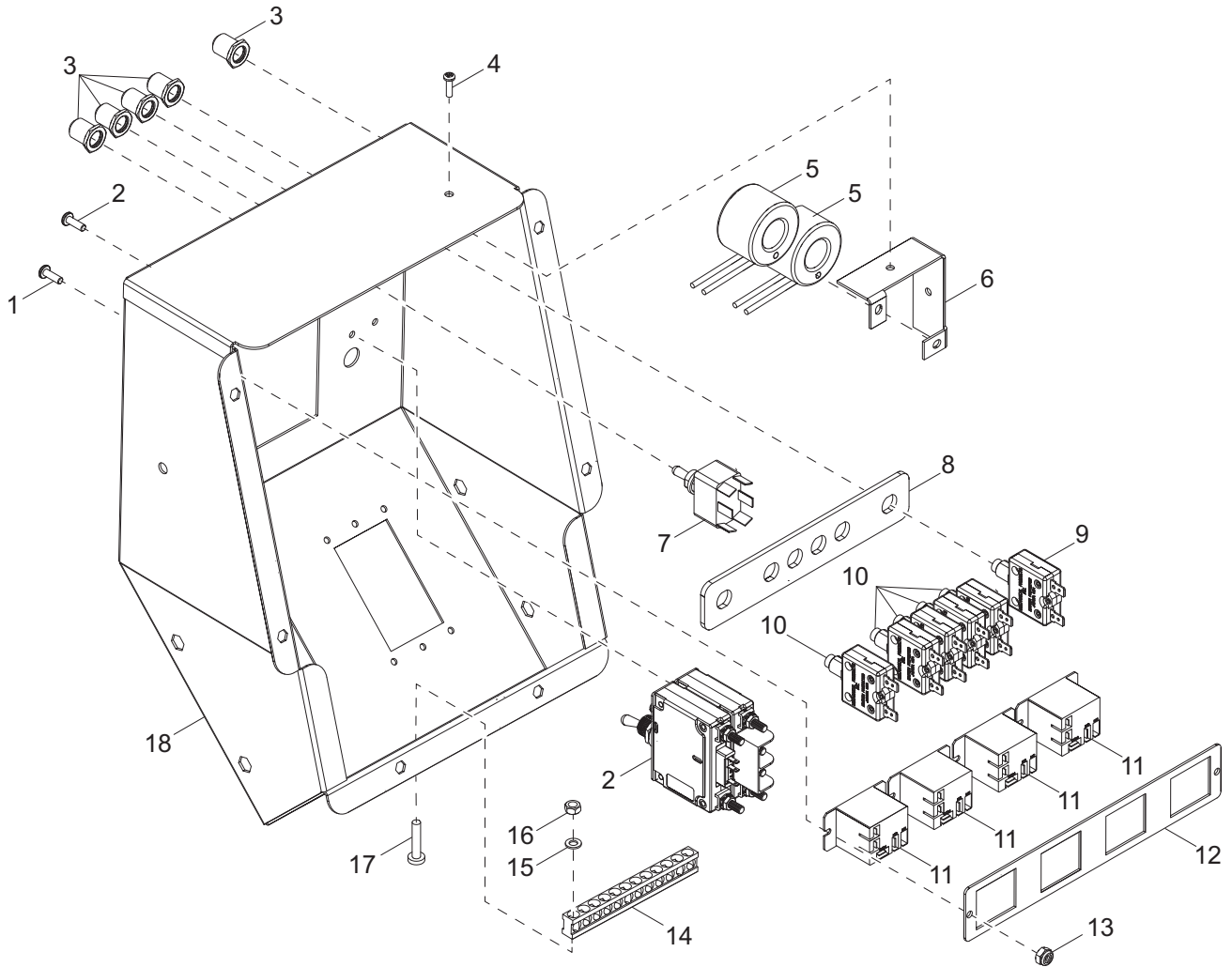


02135

CONTROL BOX ASSEMBLY

Item	Part No.	Qty	Description	Notes
1	36884B	1	Control box	
2	36938	2	Boot, push button breaker	
3	14201	1	Relay, 10A SPDT, time delay - 15 sec fixed	
4	60061	5	Nut, 10-32 nylock	
5	60386	2	Washer, .375 flat .993/.064	
6	36937	1	Breaker, 10A DC	
7	36935	1	Breaker, 15A, 1 pole, 250V	
8	62234	6	Insert, threaded #10-32 hex .020-.130 grip	
9	36880	4	Switch, light - 15A	
10	65707	1	Switch, toggle - SPDT spring	Electric mast only
11	36885B	1	Cover, control panel box	
12	60237	6	Washer, #10 flat .495/0.36	
13	60252	6	Washer, #10 split lock	
14	62254	6	Screw, 10-32 x .500 serrated flange, SS	
15	65959	2	Capacitor, dual 24 μ F sealed stud mount	
16	36980	1	Capacitor, 25 μ F, 5% 440VAC, sealed stud mount	
17	60243	4	Washer, .250 flat .735/.060	
18	60286	4	Washer, .250 split lock	
19	60281	4	Screw, .250-20 x .750 standard hex, G5	
20	60148	3	Nut, M12-1.75 serrated flange, G8.8	
21	61066	4	Screw, .312-18 x 1.0 carriage, SS	
22	60119	4	Washer, .312 flat .875/.070	
23	60095	4	Nut, .312-18 serrated flange	
24	36911B	1	Bracket, control box mounting	
25	14219	1	Strain relief - .75 Romex w/nut	
26	62210	6	Screw, 6-32 x .50 pan Phillips, SS	
27	37017	1	Cover receptacle - weather proof, 20A GFCI single	
28	14130	1	Receptacle, 120V/20A GFI	
29	36939	1	Cover, receptacle - weather proof 20/30A twist-lock	
30	14137	1	Receptacle, 240V/30A twist	
31	60728	6	Nut, 6-32 nylock	
32	63231	4	Insert, threaded .250-20 hex .027-.165 grip	
33	36975	1	Breaker, 30A main	
34	36944	1	Gasket, hour meter	
35	36886	1	Meter, hour	
36	65798	1	Plug	Manual mast only
37	36882	1	Switch, sealed key, 4-position	
38	37042	1	O-ring, .75IDx15-16 in. x 3/32 in	
39	63308	1	Screw, 10-32 x 1.250 pan Phillips, SS	
--	68282	1	Wire group, control box - electric mast	
--	68283	1	Harness, generator to control box	
--	68284	1	Harness, control box to electric mast	

CONTROL BOX ASSEMBLY - MLT6S POWERZONE OPTION (1 OF 2)

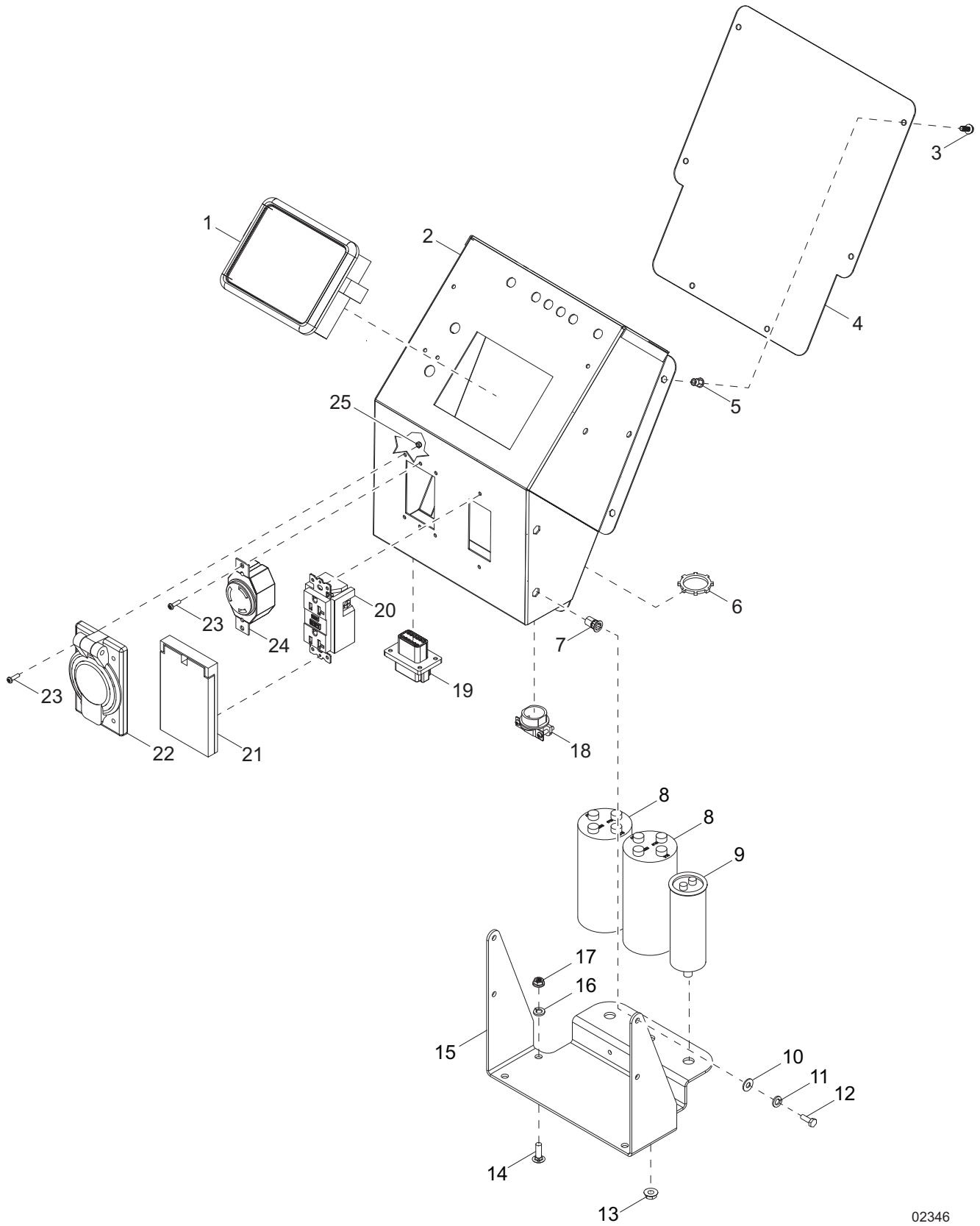


02345

CONTROL BOX ASSEMBLY - MLT6S POWERZONE OPTION (1 OF 2)

Item	Part No.	Qty	Description	Notes
1	62054	3	Screw, 8-32 x .500 pan Phillips,- SS	
2	36975	2	Breaker, 30A main	with hardware
3	36938	6	Boot, push button breaker	
4	62210	6	Screw, 6-32 x .50 pan Phillips - SS	
5	66255	2	Transformer, current	
6	38449B	1	Bracket, CT mount	
7	68508	1	Switch, toggle - SPST (on-off) 12A 125V	
8	38448B	1	Spacer, breaker control box	
9	36937	1	Breaker, 10A DC	
10	36935	5	Breaker, 15A, 250V, 1 pole	
11	29759	4	Relay, 12V coil 120-240 VAC rated	
12	38447B	1	Bracket, relay	
13	60270	3	Nut, 8-32 nylock, G6	
14	14204	1	Kit, ground bar	
15	60252	6	Washer, #10 split lock	
16	60318	2	Nut, 8-32 Hex, G5	
17	60406	2	Screw, 8-32 x 1.00 pan Phillips, G2	
18	37823B	1	Box, control - PZ	

CONTROL BOX ASSEMBLY - MLT6S POWERZONE OPTION (2 OF 2)

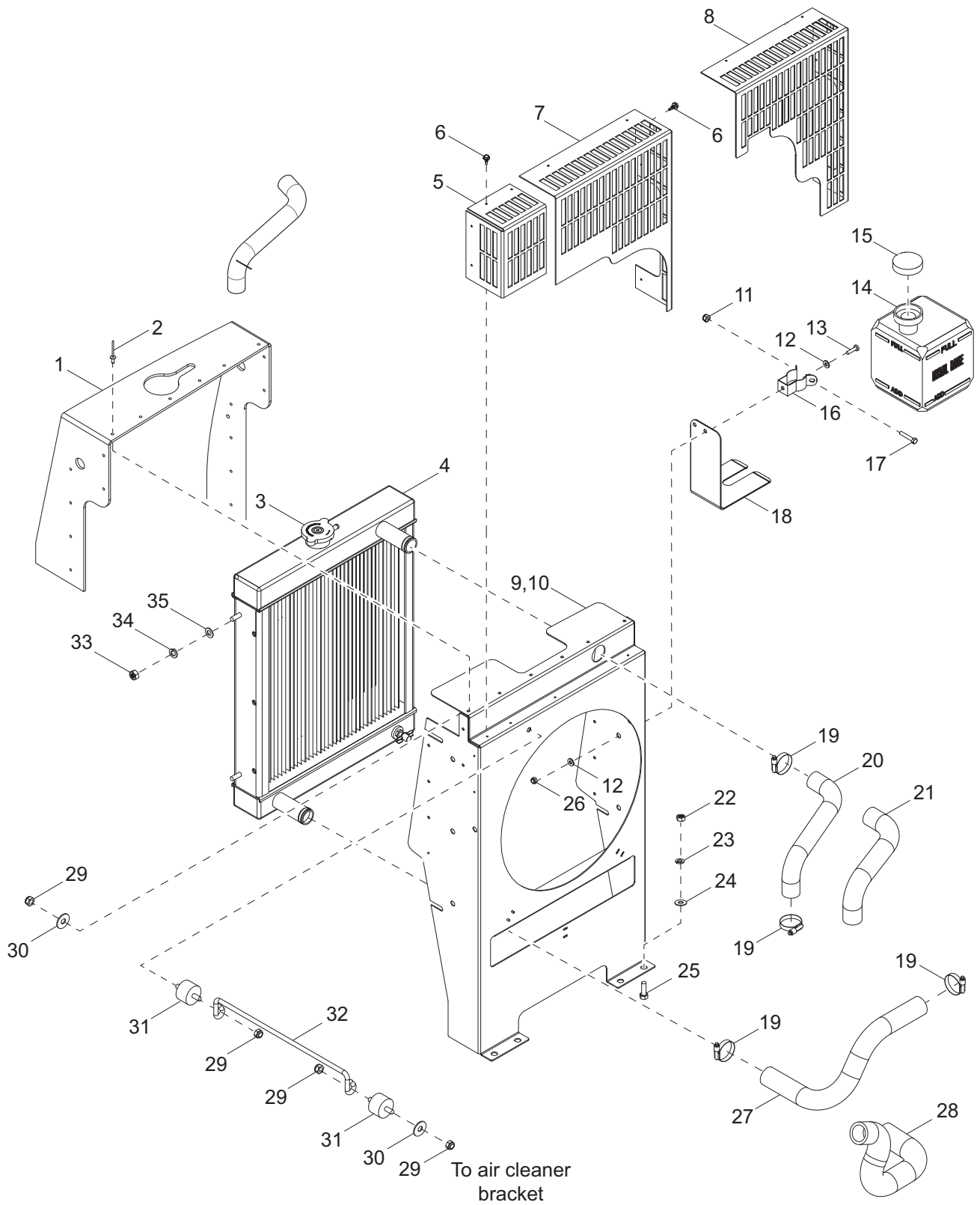


02346

CONTROL BOX ASSEMBLY - MLT6S POWERZONE OPTION (2 OF 2)

Item	Part No.	Qty	Description	Notes
1	70137	1	Controller, Deep Sea - programmed	
2	37823B	1	Box, PZ control panel	
3	60277	6	Screw, 10-32 x .500 pan Phillips, G2	
4	38413B	1	Cover, control panel box	
5	62234	6	Insert, 10-32 hex, .020-.130 grip, threaded	
6	16300	2	Nut, .750 Romex strain relief	
7	63231	4	Insert, .250-20 hex, .027-.165 grip, threaded	
8	65959	2	Capacitor, dual 24 μ F sealed stud mount	
9	36980	1	Capacitor, 25 μ F, 5% 440VAC, sealed stud mount	
10	60243	4	Washer, .250 flat .735/.060	
11	60286	4	Washer, .250 split lock	
12	60647	4	Screw, .250-20 x .500 hex, G5	
13	60148	3	Nut, M12-1.75 serrated flange, G8.8	
14	61066	4	Screw, .312-18 x 1.0 carriage - SS	
15	38409B	1	Bracket, control box mounting	
16	60119	4	Washer, .312 flat .875/.070	
17	60095	4	Nut, .312-18 serrated flange - case hardened	
18	14219	2	Strain relief, .75 Romex w/nut	
19	66695	1	Connector, Duetsch 12 position - flange DT	
20	14130	1	Receptacle, 120V/20A GFI	
21	37017	1	Cover, receptacle 20A GFCI single - weatherproof	
22	36939	1	Cover, receptacle 20/30A - weatherproof	
23	62210	6	Screw, 8-32 x .500 pan Phillips - SS	
24	14137	1	Receptacle, 250V/ 30A twist	
25	60728	6	Nut, 6-32 nylock, G5	
--	68534	1	Harness, control box PZ	replaces p/n 68284
--	68535	1	Harness, gen to control box PZ	replaces p/n 68283
--	69654	1	Harness, engine PZ	replaces p/n 37034

COOLING SYSTEM ASSEMBLY

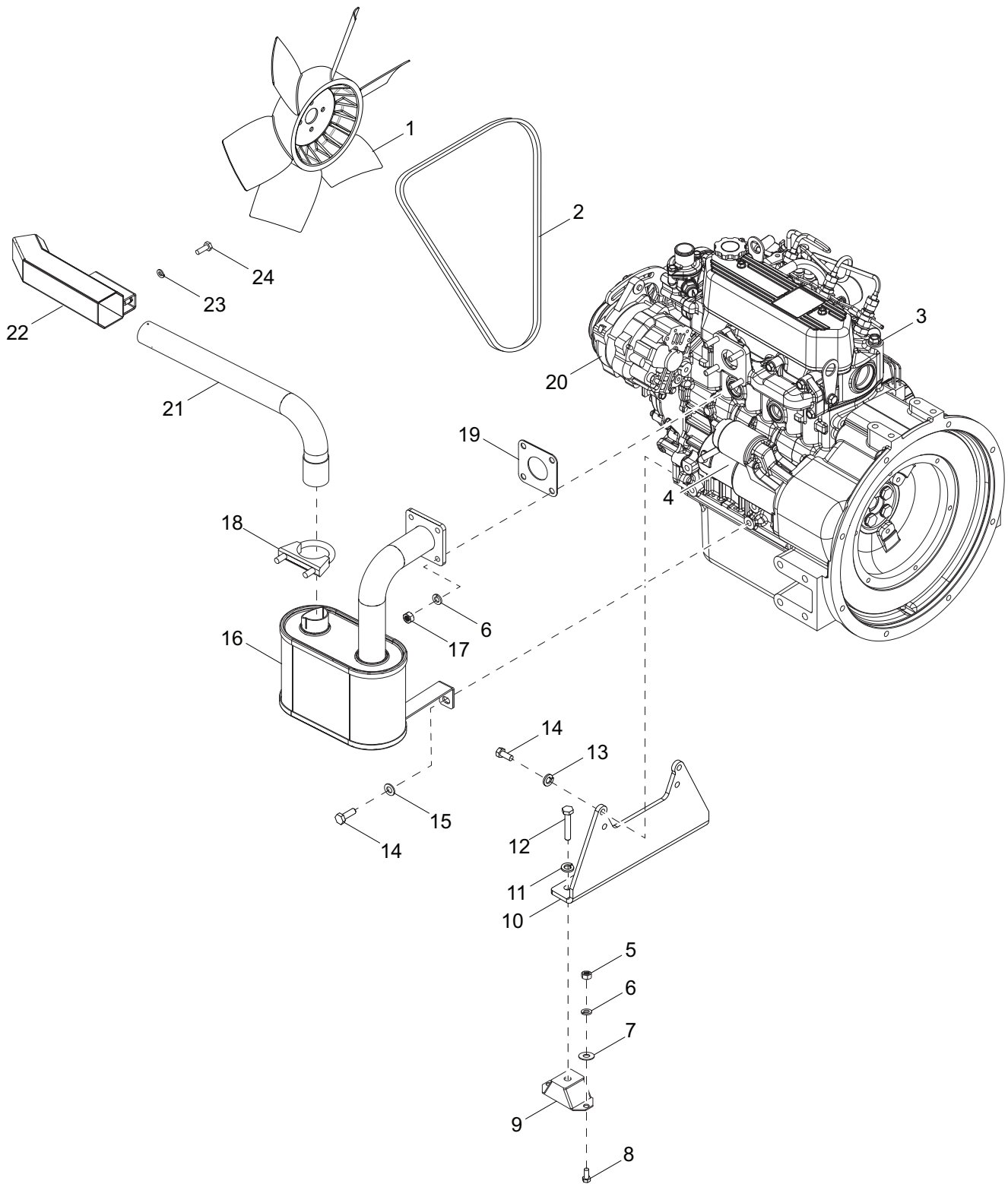


02437

COOLING SYSTEM ASSEMBLY

Item	Part No.	Qty	Description	Notes
1	36979	1	Seal, rubber, cooling	
2	60195	18	Rivet, .188 dia. x .375 to .500 grip, large flange	
3	19219	1	Cap, radiator pressure small - 14.7 psi	
4	10000020162	1	Radiator	
5	36227B	1	Guard, fan, left	
6	60364	9	Screw, 10-16x5.0 std hex, G2	
7	72161B	1	Guard, fan, right	For Mitsubishi
8	36232B	1	Guard, fan, right	For Kubota
9	36226B	1	Fan shroud	For Mitsubishi
10	36233B	1	Fan shroud	For Kubota
11	60144	1	Nut, .250-20 nylock, G5	
12	60067	4	Washer, #10 flat .435/.060, SS	
13	61180	2	Screw, 10-32 x .750 pan phil, SS	
14	20287	1	Jug, overflow 2 qt. (.5 gal)	
15	19714	1	Cap, overflow jug	
16	19726	1	Clamp, overflow bottle	
17	60414	1	Screw, .250-20 x 1.50 standard hex, G5	
18	22419B	1	Bracket, support overflow jug .5 gallon	
19	15422	4	Clamp, hose - SAE 020 (.75-1.75)	
20	32383SRV	1	Hose, radiator - upper	For Mitsubishi
21	36977	1	Hose, radiator - upper	For Kubota
22	60285	14	Nut .312-18 hex, G2	
23	60271	21	Washer, .312 split lock	
24	60119	24	Washer .312 flat .875/.070	
25	61066	4	Screw, .312-18 x 1.00 carr sqr 18-8 SS	
26	60061	1	Nut, 10-32 nylock	
27	16688SRV	1	Hose, radiator - lower	For Mitsubishi
28	12350	1	Hose, radiator - lower	For Kubota
29	62079	4	Nut, .312-18 nylock jam	
30	60119	2	Washer, .312 flat .875/.070	
31	34052	2	Isolator, rubber 1.50 x 1.0, 5/16-18 studs	
32	36989	1	Rod, radiator stay	
33	60032	4	Nut, M8-1.25 hex, G8.8	
34	60029	2	Washer, M8 split lock	
35	60166	2	Washer, M8 flat	

ENGINE ASSEMBLY - MITSUBISHI (1 OF 2)



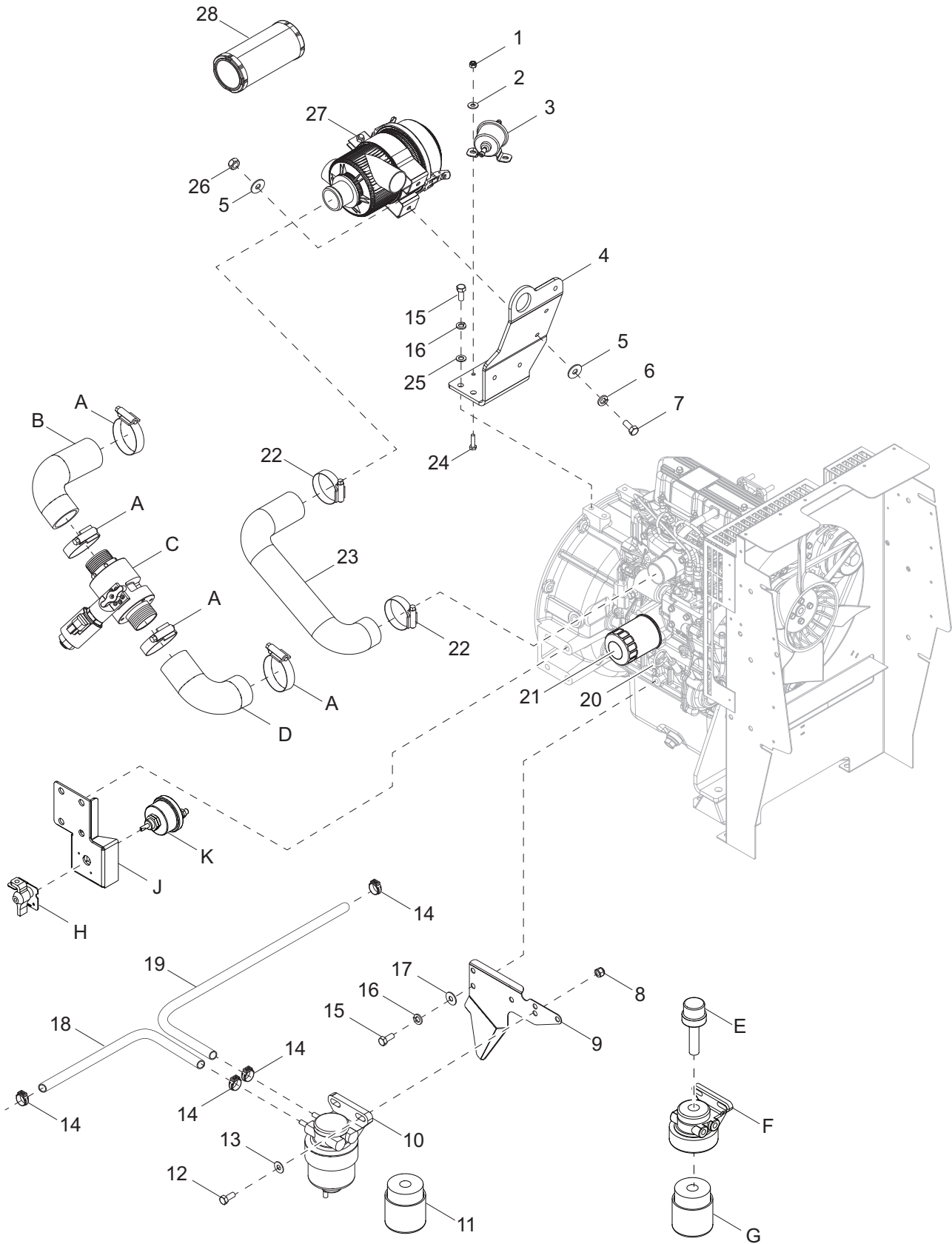
02438

ENGINE ASSEMBLY - MITSUBISHI (1 OF 2)

Item	Part No.	Qty	Description	Notes
1	16742	1	Fan, engine	
2	16692	1	V-belt, alternator	
3	72154	1	Engine, L3E T4	
4	70232	1	Starter	
5	60285	4	Nut .312-18 hex, G2	
6	60271	8	Washer, .312 split lock	
7	60119	4	Washer .312 flat .875/.070	
8	61066	4	Screw, .312-18 x 1.00 carriage, SS	
9	34052	2	Isolator, rubber - 1.50 x 1.00, 5/16-18 studs	
10	37030B	1	Bracket, engine mount	
11	60702	2	Washer, .500 split lock, SS	
12	60275	2	Screw, .500-13 x 1.00 standard hex, G5	
13	60026	4	Washer, M10 split lock	
14	60422	5	Screw, M10-1.25 x 25 standard hex, G8.8	
15	60027	1	Washer, M10 flat	
16	76191	1	Muffler, side exhaust	
17	60032	4	Nut, M8-1.25 hex, G8	
18	25455	1	Clamp, muffler 1.50	
19	11042SRV	1	Gasket, muffler	
20	16743	1	Alternator	
21	69951BH	1	Tube, exhaust	
22	76924B	1	Shield, exhaust	
23	60286	2	Washer, .250 split lock	
24	60281	2	Screw, .250-20 x .750 standard hex, G5	
--	65684	1	Harness, lead - Mitsubishi	
--	37034	1	Harness, engine	
--	11691	1	Bracket, lower radiator hose guard - Mitsubishi	
--	11147	1	Oil cap	

Note: Engine and generator parts used in all Generac Mobile Products, LLC equipment carry the Original Equipment Manufacturer (OEM) warranty unless otherwise stated. OEM warranty parts must be purchased through an OEM dealer. Please contact Generac Mobile Products, LLC with questions.

ENGINE ASSEMBLY - MITSUBISHI (2 OF 2)



02439

ENGINE ASSEMBLY - MITSUBISHI (2 OF 2)

Item	Part No.	Qty	Description	Notes
1	60144	2	Nut, .250-20 nylock, G5	
2	60243	4	Washer, .250 flat .735/.060	
3	13278SRV	1	Fuel pump, electric	
4	17977B	1	Bracket, air cleaner	
5	60119	26	Washer, .312 flat .875/.07	
6	60271	20	Washer, .312 split lock	
7	60694	4	Screw, 8-32 x .750 pan Phillips, SS	
8	60358	2	Nut, .375-16 nylock, G5	
9	72060B	1	Plate, oil deflector	
10	17641	1	Fuel filter head and element	incl. 17647
11	17647	1	Element, fuel filter	
12	60352	2	Screw, .375-16 x 1.250 standard hex, G5	
13	60119	2	Washer, .312 flat .875/.070	
14	60777	4	Clamp, hose - .312 fuel hose crimp style	
15	60422	7	Screw, M10-1.25 x 25 standard hex, G8.8	
16	60026	7	Washer, M10 split lock	
17	60386	3	Washer, .375 flat .993/.064	
18	50018	1.5 ft	Hose, fuel - .312 ID, 50 psi SAE 30R7	
19	50018	2.8 ft	Hose, fuel - .312 ID, 50 psi SAE 30R7	
20	11148	1	Dipstick, oil	
21	10000014392	1	Filter, oil 750 hr.	750 hr interval
22	60316	2	Clamp, hose - SAE 032 (1.56-2.50)	
23	16589	1	Hose, air cleaner	
24	60393	2	Screw, .250-20 x 1.00 standard hex, G5	
25	60027	4	Washer, M10 flat	
26	60285	2	Nut, .312-18 hex, G2	
27	34066	1	Filter, air with bracket	incl. 16444
28	16444	1	Element, air filter	

OPTIONAL FEATURES

Positive Air Shutdown

A	60316	4	Clamp, hose - SAE 032 (1.56-2.50)
B	70100	1	Hose, intake to PAS
C	72137	1	Valve, PAS 1.75 ESD 12V heater
D	70101	1	Hose, engine to PAS
--	52003	1	Box, 12V PAS control box

Heated Fuel Filter

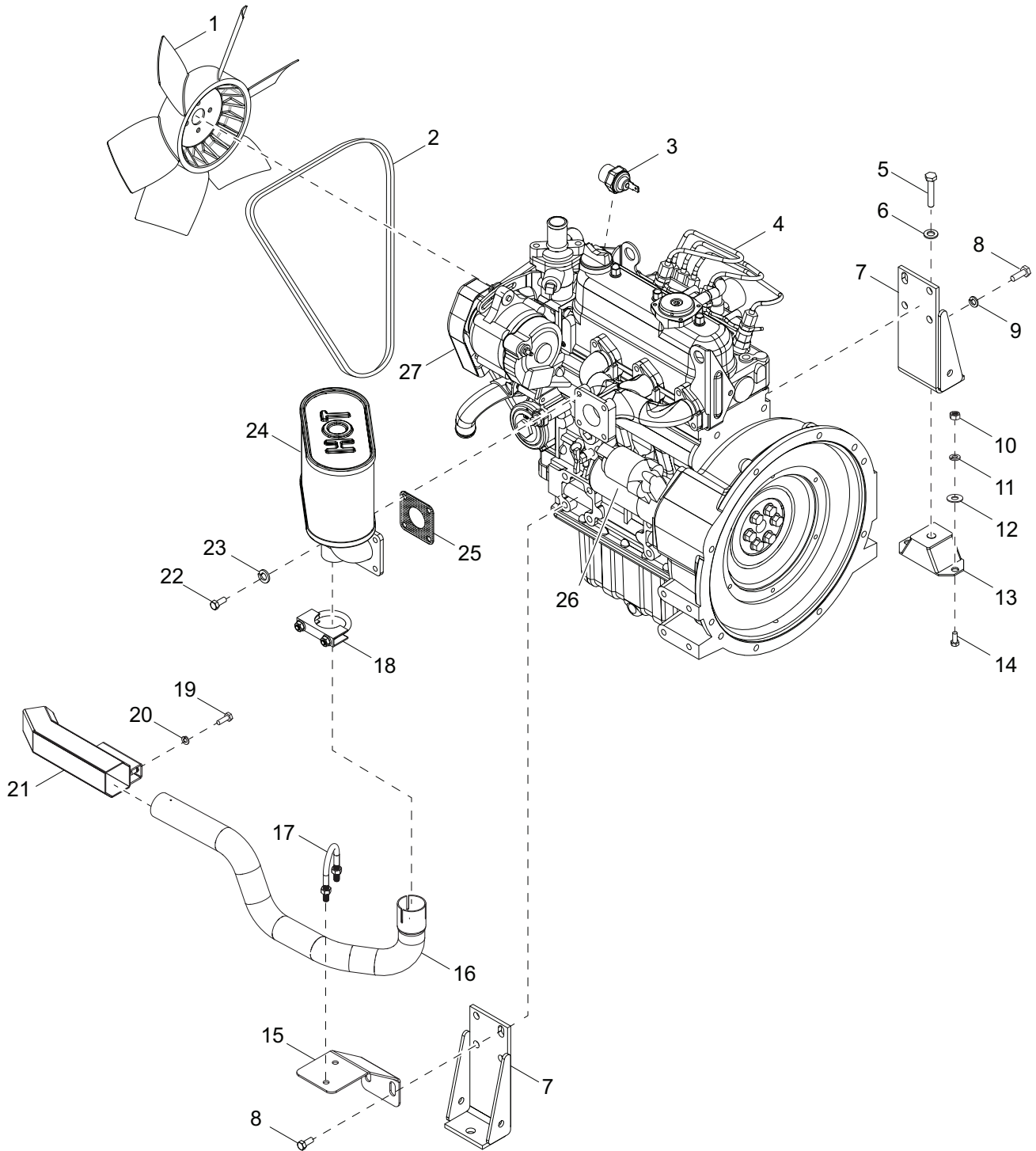
E	13876	1	Heater, fuel filter
F	17641	1	Filter, fuel - head
G	17647	1	Filter, fuel - element

Battery Disconnect

H	65499	1	Switch lockout lever kit
J	10000008538	1	Bracket, battery disconnect
K	65498	1	Switch, disconnect

Note: Engine and generator parts used in all Generac Mobile Products, LLC equipment carry the Original Equipment Manufacturer (OEM) warranty unless otherwise stated. OEM warranty parts must be purchased through an OEM dealer. Please contact Generac Mobile Products, LLC with questions.

ENGINE ASSEMBLY - KUBOTA (1 OF 2)



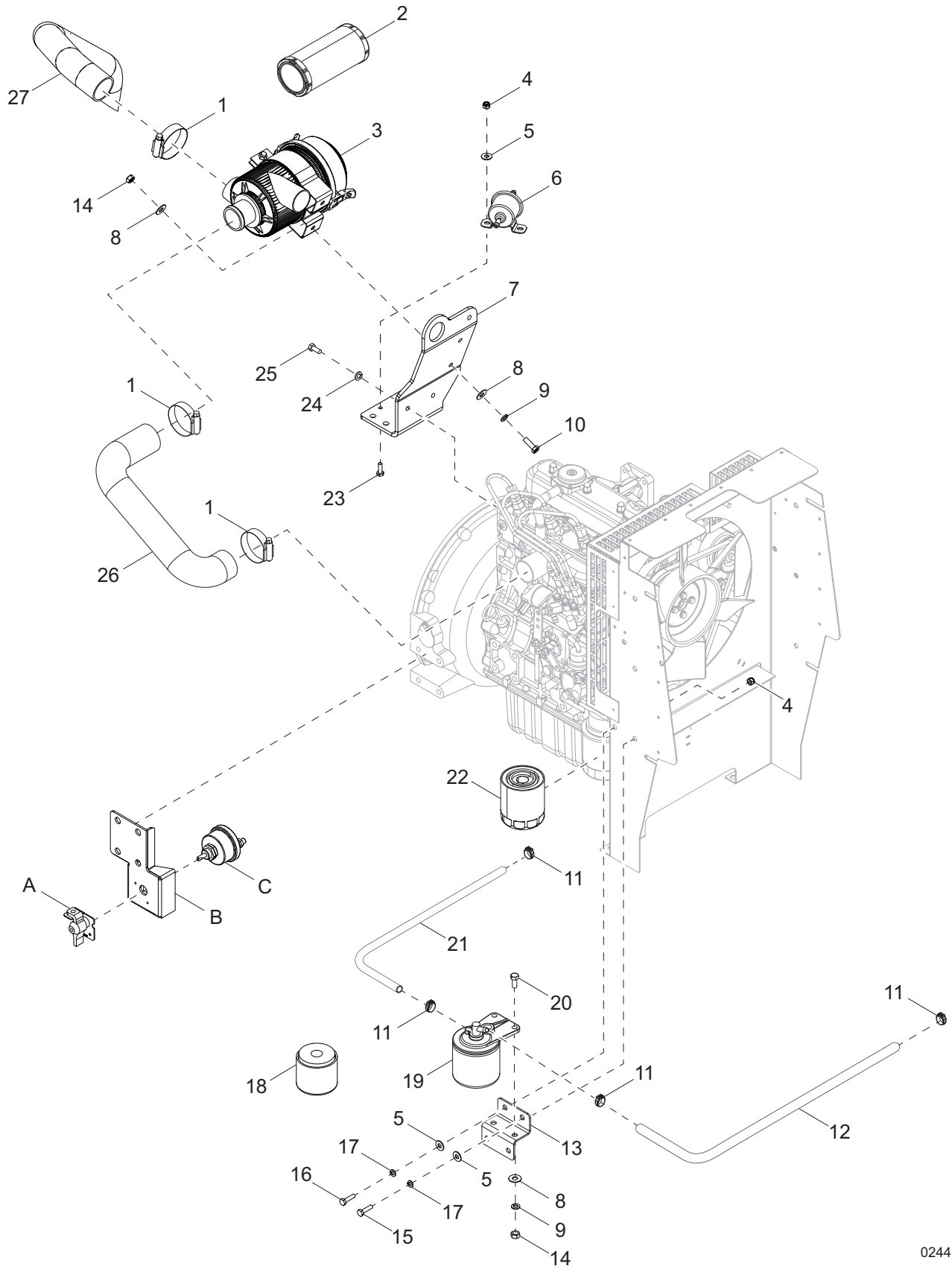
02440

ENGINE ASSEMBLY - KUBOTA (1 OF 2)

Item	Part No.	Qty	Description	Notes
1	15495	1	Fan, pusher	
2	11628	1	V-belt, Kubota	
3	14099	1	Switch, coolant temperature	
4	13310	1	Engine, Kubota D1005-E3BG1-MGM-1	
5	60275	4	Screw, .500-13 x 1.00 standard hex, G5	
6	60702	4	Washer, .500 split lock, SS	
7	12338B	2	Weldment, engine mount - Kubota D905	
8	60422	8	Screw, M10-1.25 x 25 standard hex, G8.8	
9	60026	8	Washer, M10 split lock	
10	60285	4	Nut, .312-18 hex, G2	
11	60271	4	Washer, .312 split lock	
12	60119	4	Washer, .312 flat .875/.070	
13	15241	2	Isolator, rubber 80-200 lbs., 2" wide	
14	61066	4	Screw, .312-18 x 1.00 carriage, SS	
15	10000022911	1	Bracket, side exhaust pipe	
16	10000022847	1	Pipe, side exhaust	
17	61235	1	U-bolt, .312-18 x 2.688 x 2.06	
18	68082	1	Clamp, muffler - 1.63	
19	60281	2	Screw, .250-20 x .750 standard hex	
20	60286	2	Washer, .250 split lock	
21	76924B	1	Shield, exhaust	
22	63168	4	Screw, M8-1.25 x 30 standard hex, 10.9	
23	60029	6	Washer, M8 split lock	
24	17949	1	Muffler	
25	11042SRV	1	Gasket, muffler	
26	30582	1	Starter, Kubota D1005	
27	12486	1	Alternator	

Note: Engine and generator parts used in all Generac Mobile Products, LLC equipment carry the Original Equipment Manufacturer (OEM) warranty unless otherwise stated. OEM warranty parts must be purchased through an OEM dealer. Please contact Generac Mobile Products, LLC with questions.

ENGINE ASSEMBLY - KUBOTA (2 OF 2)



02441

ENGINE ASSEMBLY - KUBOTA (2 OF 2)

Item	Part No.	Qty	Description	Notes
1	60316	3	Clamp, hose - SAE 032 (1.56-2.50)	
2	16444	1	Element, air filter	
3	34066	1	Filter, air, w bracket	incl. 16444
4	60144	3	Nut, .250-20 nylock, G5	
5	60243	6	Washer, .250 flat .735/.060	
6	13278SRV	1	Fuel pump, electric	
7	17977B	1	Bracket, air cleaner	
8	60119	6	Washer, .312 flat .875/.070	
9	60271	4	Washer, .312 split lock	
10	60028	2	Screw, .312-18 x 1.00 standard hex, G5	
11	60777	4	Clamp, hose - .312 fuel hose crimp style	
12	19117	1	Hose, fuel - .312 ID 50 psi SAE 30R7	
13	36234B	1	Bracket, fuel system	
14	60285	4	Nut, .312-18 hex, G2	
15	60393	1	Screw, .250-20 x 1.00 standard hex, G5	
16	60223	1	Screw, M6-1.00 x 20 standard hex, G4.8	
17	60286	4	Washer, .250 split lock	
18	13515	1	Element, fuel filter	
19	13481	1	Assembly, fuel filter	includes 13515
20	62001	2	Screw, .312-18 x 1.250 standard hex, G5	
21	16232	1	Hose, fuel - .312 ID 50 psi SAE 30R7	
22	10775	1	Filter, oil	
23	60281	2	Screw, .250-20 x .750 standard hex, G5	
24	60026	2	Washer, M10 split lock	
25	60422	2	Screw, M10-1.25 x 25 standard hex, G8.8	
26	16589	1	Hose, air cleaner	
27	10434	1	Hose, air intake	

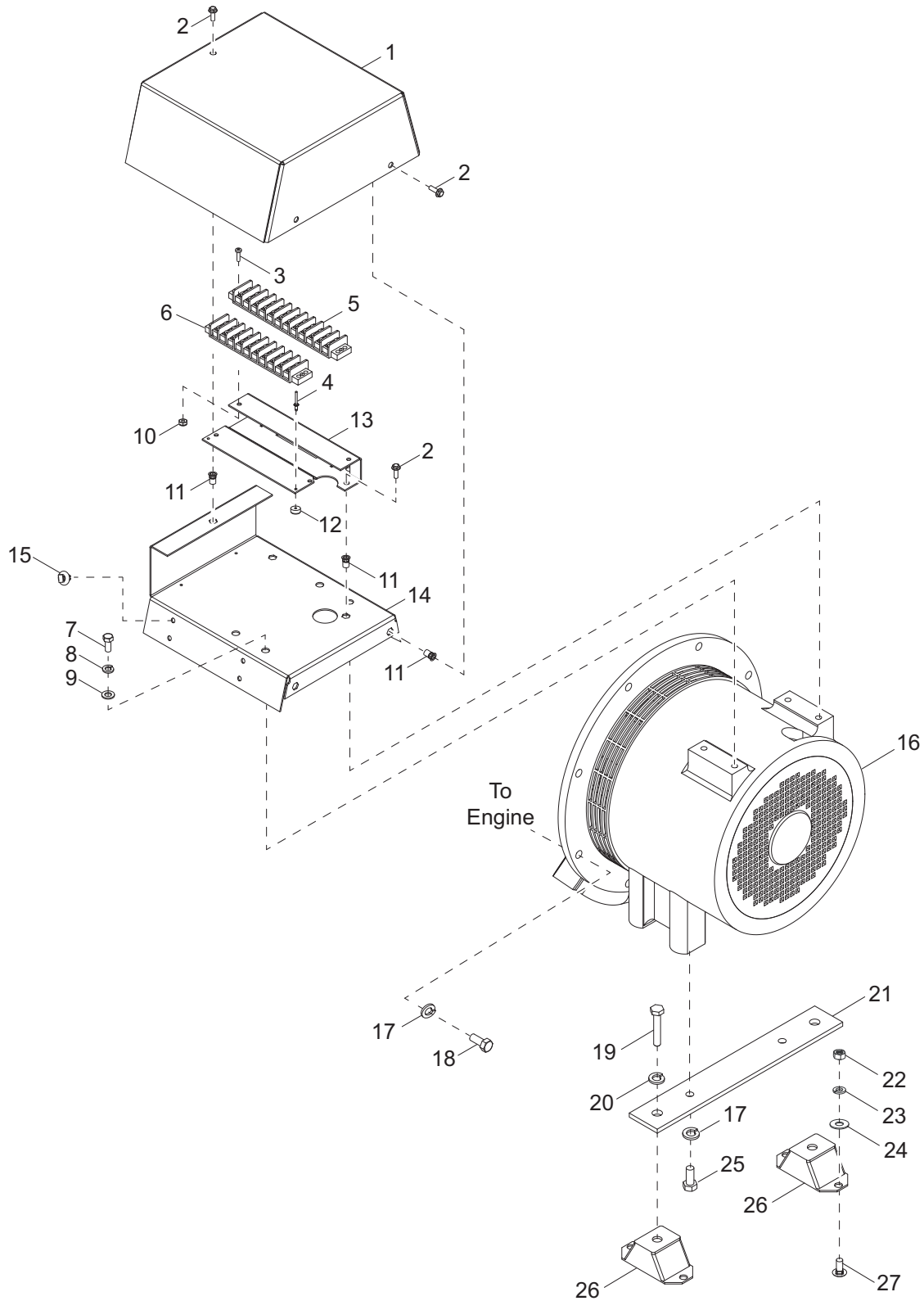
OPTIONAL FEATURES

Battery Disconnect

A	65499	1	Switch lockout lever kit
B	10000008538	1	Bracket, battery disconnect
C	65498	1	Switch, disconnect

Note: Engine and generator parts used in all Generac Mobile Products, LLC equipment carry the Original Equipment Manufacturer (OEM) warranty unless otherwise stated. OEM warranty parts must be purchased through an OEM dealer. Please contact Generac Mobile Products, LLC with questions.

GENERATOR ASSEMBLY



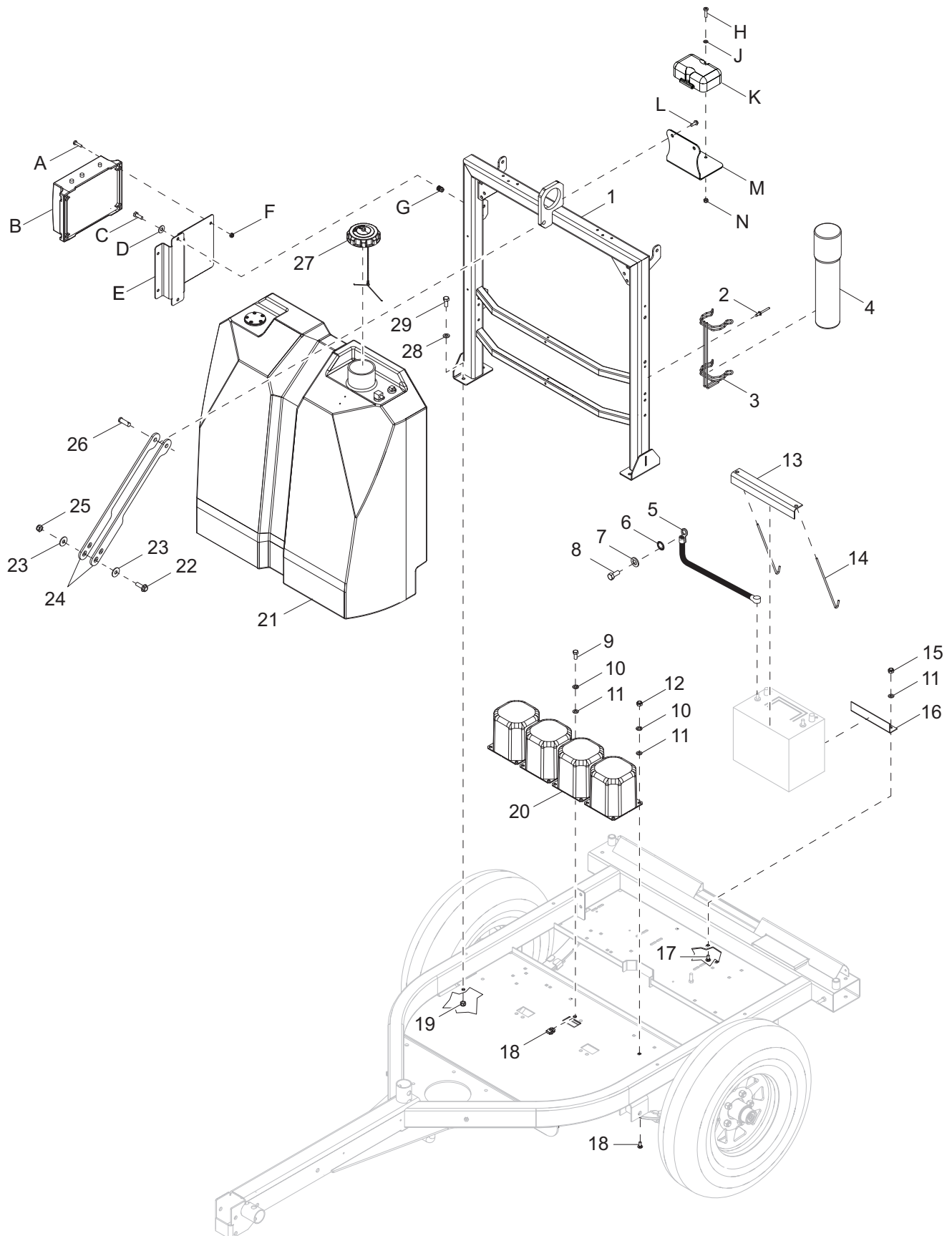
02442

GENERATOR ASSEMBLY

Item	Part No.	Qty	Description	Notes
1	17994B	1	Cover, generator, Marathon	
2	60175	5	Screw, .250-20x.500 serrated flange hex, G5	
3	60062	4	Screw, 10-32 x .750 pan Phillips, G2	
4	60267	2	Rivet, .125 diameter x .191 to .270 grip	
5	14139	1	Block terminal - 12 position	
6	14203	1	Block terminal - 10 position	
7	61082	4	Screw, M8-1.25 x 20 serrated flange hex	
8	60271	4	Washer, .312 split lock	
9	60243	4	Washer, .250 flat .735/.060	
10	60061	4	Nut, 10-32 nylock	
11	63231	9	Insert, threaded .250-20 hex .027-.165 grip	
12	15215	2	Rubber bumper	
13	36942B	1	Bracket, terminal strip	
14	54254B	1	Plate, electric junction	
15	66685	8	Mount cable tie, .25-.28 diameter,.031-.276 grip	
16	10000020581	1	Generator, Marathon, 6kW, 60Hz, cap	
17	60206	8	Washer, .375 split lock	
18	60352	8	Screw, .375-16x1.250 standard hex, G5	
19	60275	2	Screw, .500-13 x 1.00 standard hex, G5	
20	60702	2	Washer, .500 split lock, SS	
21	15045B	1	Bracket, generator mounting	with 16556
22	60285	4	Nut, .312-18 hex, G2	
23	60271	4	Washer, .312 split lock	
24	60119	4	Washer, .312 flat .875/.070	
25	60352	2	Screw, .375-16 x 1.250 standard hex, G5	
26	15241	2	Isolator, rubber - 80-200 lb	
27	61066	4	Screw, .312-18 x 1.00 carriage, SS	
--	60168	6	Screw, .312-18 x .750 standard hex, G5	For flex plate mount
--	60166	18	Washer, M8 flat DIN 125 hardened	3 each w/60168

Note: Engine and generator parts used in all Generac Mobile Products, LLC equipment carry the Original Equipment Manufacturer (OEM) warranty unless otherwise stated. OEM warranty parts must be purchased through an OEM dealer. Please contact Generac Mobile Products, LLC with questions.

COMPONENTS TO TRAILER ASSEMBLY



02443

COMPONENTS TO TRAILER ASSEMBLY

Item	Part No.	Qty	Description	Notes
1	10000023283	1	Weldment, lift support	
2	60195	2	Rivet, .188 diameter. x .375 to .500 grip	
3	11222	1	Bracket, manual holder	
4	11121	1	Manual holder tube, black 14 in	
5	10699	1	Cable, battery - 24" 4GA , .375 lug, black	
6	60747	1	Washer, .375 internal star	
7	60026	1	Washer, M10 split lock	
8	60495	1	Screw, M10-1.25 x 16 hex, G8.8	
9	60028	6	Screw, .312-18 x 1.00 standard hex, G5	
10	60271	8	Washer, .312 split lock	
11	60119	8	Washer, .312 flat .875/.07	
12	60285	2	Nut, .312-18 hex, G2	
13	12924B	1	Angle, battery hold-down	
14	60820	2	Bolt, J - .250-20 x 9.0	
15	60303	1	Nut, .312-18 nylock, G2	
16	17992B	1	Bracket, battery stop	
17	61066	2	Screw, .312-18 x 1.00 carriage, SS	
18	62086	6	Nut, .312-18 U-clip - short type	
19	60358	4	Nut, .375-16 nylock, G5	
20	10656SRV	4	Assembly, transformer - can and base - 60Hz-MH	
21	69919	1	Tank, fuel - 42 gal w/sending unit	
22	60484	2	Screw, .500-13 x 2.00 standard hex, G5	
23	60309	4	Washer, .500 flat 1.060/.090	
24	39660B	2	Bar, chassis support	
25	62221	2	Nut, .500-13 nylock, G5	
26	63325	1	Pin, clevis - .500 diameter. x 1.063 UL, ZP	
27	16326	1	Cap, fuel, 3.5 diameter., diesel, vent w/tether	
28	60386	4	Washer, .375 flat .993-.064	
29	60352	4	Screw, .375-16 x 1.250 standard hex, G5	

OPTIONAL FEATURES

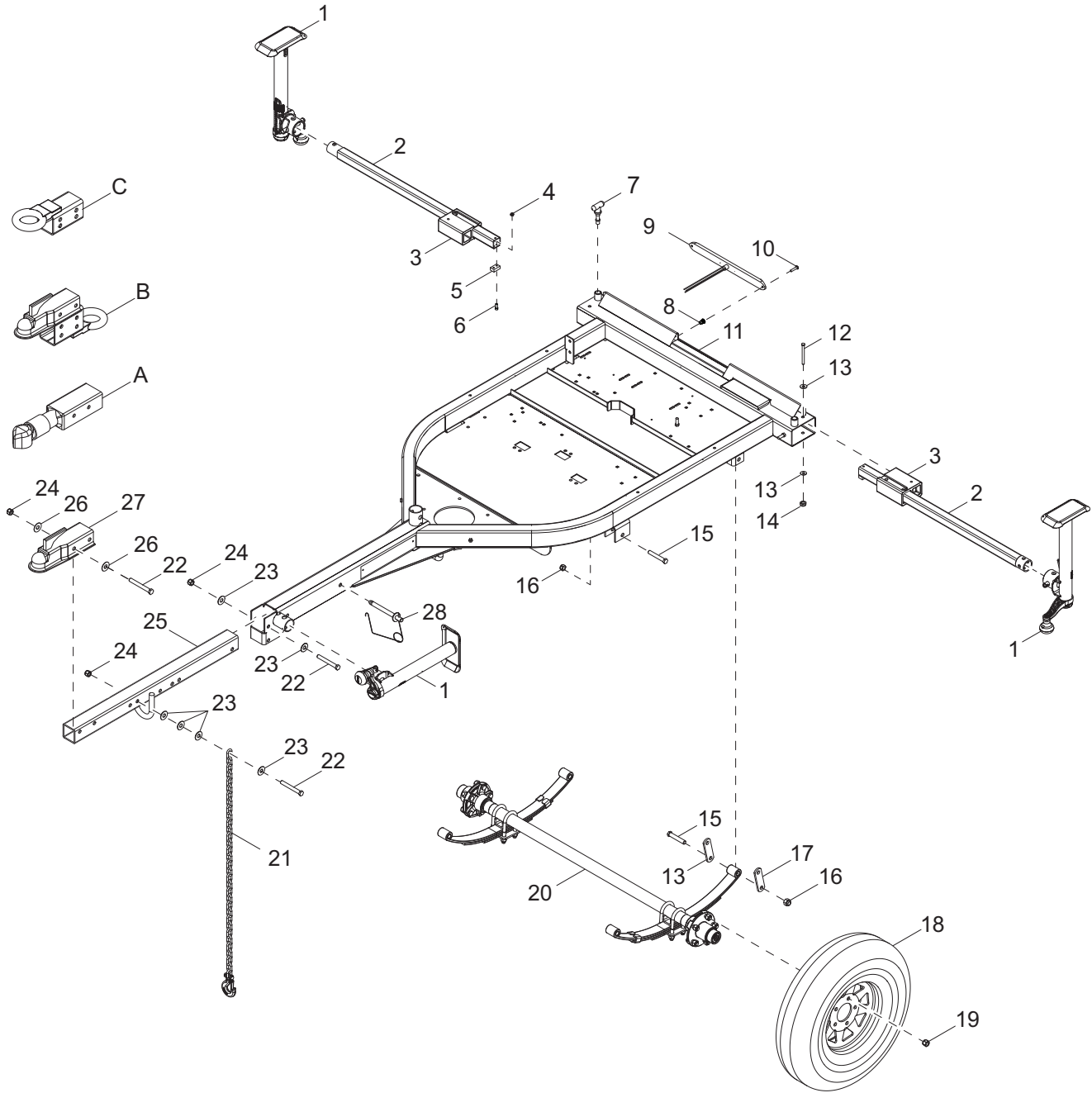
Battery Charger

A	60062	4	Screw, 10-32 x .750 pan Phillips, G2
B	66212	1	Charger, battery 2-5A/1-10A, 3 stage, 2 output
C	60281	2	Screw, .250-20 x .750 hex, G5
D	60243	2	Washer, .250 flat .735/.060
E	73218B	1	Bracket, battery charger
F	60415	4	Nut, 10-32 nylock
G	63132	2	Insert, .250-20 splined, .027-.165

ZTR Telemetry

H	60770	2	Screw, M4-0.70 x 20 pan Phillips, G4.8
J	60237	2	Washer, #10 flat .495/.036
K	37731	1	Telemetry, ZTR
L	68429	2	Screw, .312-18 x .750 flg hex, G2 self-tap
M	51002B	1	Bracket, ZTR mounting
N	60051	2	Nut, M4-0.70 nylock, G8.8
--	68431	1	Lift support (modified 28341B)

TRAILER ASSEMBLY



02444

TRAILER ASSEMBLY

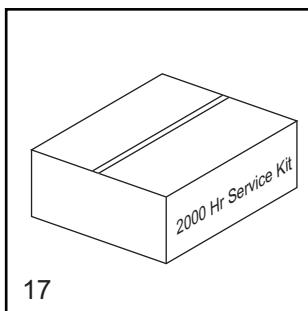
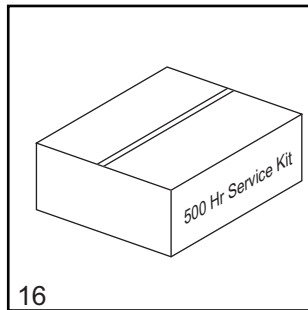
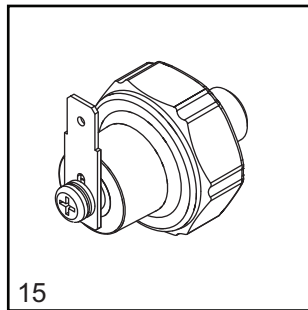
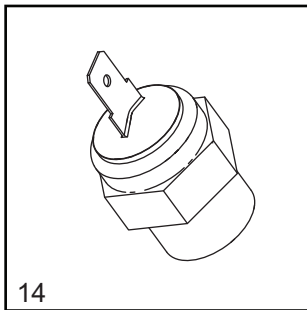
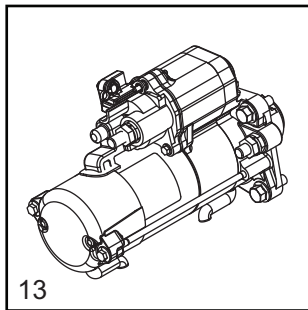
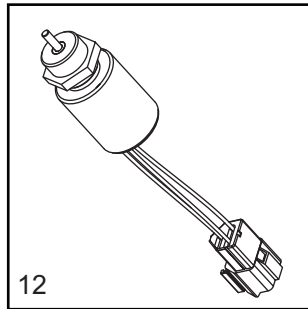
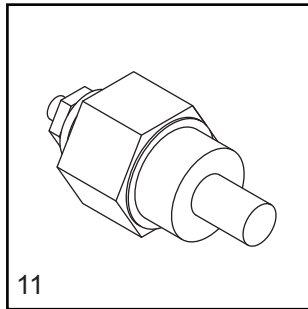
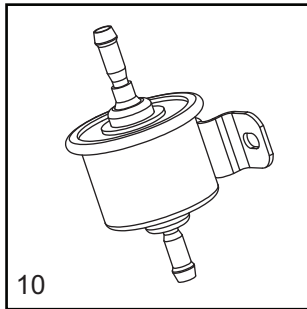
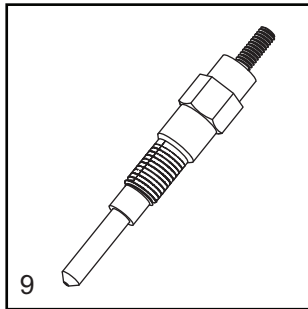
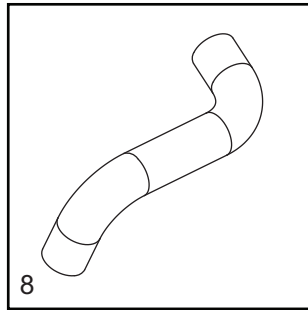
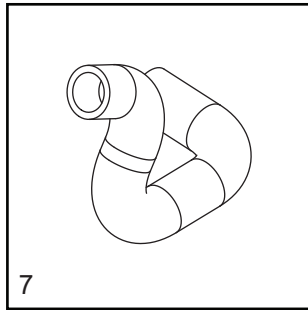
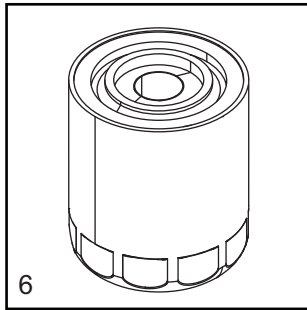
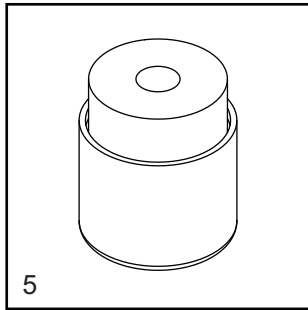
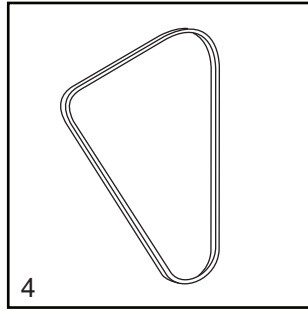
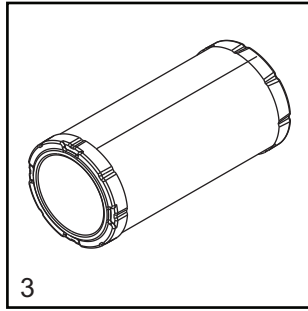
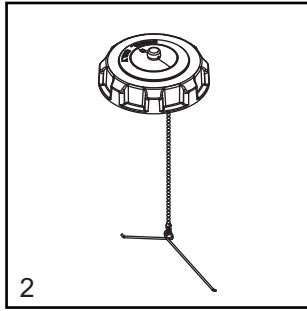
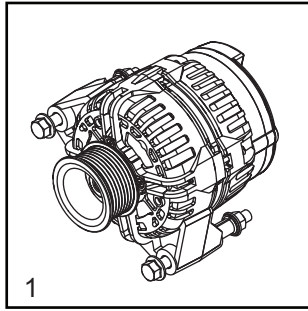
Item	Part No.	Qty	Description	Notes
1	72126	3	Jack, top wind - 1200 lb, tube mounted	
2	70230ZY	2	Weldment, outrigger tube	
3	36869	2	Guide block (molded) - outrigger	
4	60144	4	Nut, .250-20 nylock, G5	
5	72128	2	Pad/stop, wear - outrigger	
6	73196	4	Screw, .250-20 x 2.25 socket head	
7	36890	3	Spring pin, handle	
8	73092	4	Insert, #8-32 .020-.080 grip - close sealed	
9	36960	2	Assembly, tail light	
10	60694	4	Screw, 8-32 x .750 pan Phillips	
11	10000021817	1	Weldment, lt chassis	
12	60404	2	Screw, .312-18 x 4.00 standard hex, G5	
13	60119	4	Washer, .312 flat .875/.070	
14	60303	2	Nut, .312-18, nylock, G2	
15	60503	6	Screw, shackle, .562-18 x 3.00 standard hex, G5	
16	60504	6	Nut, .562-18 lock hex, G5	
17	19637	4	Plate, shackle bracket - 3.125"	
18	15976B	2	Wheel, ST175/8013 - 1360 lb	
19	60096	10	Nut, .500-20 lug, G5	
20	34760	1	Axle, 2200lb 47TC 35SC	
21	23367	2	Chain, safety - 7800 lbs rated	
22	50215	5	Screw, .500-13 x 4.00 standard hex, G5	
23	60416	10	Washer, .500 flat 1.375/.090	
24	62221	5	Nut, .500-13 nylock, G5	
25	17969B	1	Weldment, tilt tongue	
26	60309	4	Washer, .500 flat 1.060/.090	
27	16830	1	Coupler, 2.00 ball/2.50 channel	
28	33943	2	Pin, locking .500 x 3.50	
--	68348	1	Harness, trailer wiring, tandem tow	
--	68324	1	Harness, trailer enclosure front	
--	10000020727	1	Assembly, harness extension loomed	

OPTIONAL FEATURES

Hitch Options

A	13003B	1	Coupler, 2.00 ball/3.00 channel, Bulldog
B	34792ZC	1	Weldment, combination hitch - 2.50 tongue
C	16835B	1	Weldment, lunette ring 3.00 ID - 2.50 tongue
--	65548	1	Adapter, 4 pin flat to 4 pin flat x 12.00

RECOMMENDED SPARE PARTS - ENGINE AND SERVICE KITS - MITSUBISHI



RECOMMENDED SPARE PARTS - ENGINE AND SERVICE KITS - MITSUBISHI

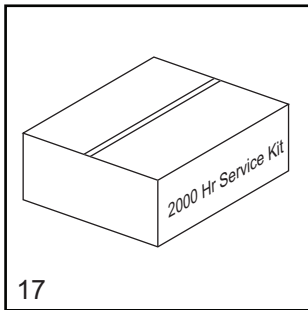
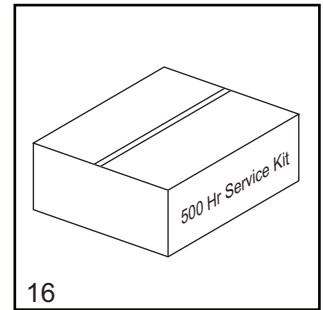
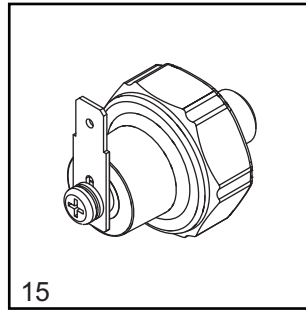
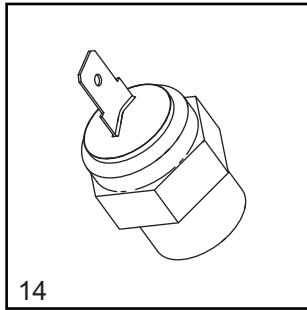
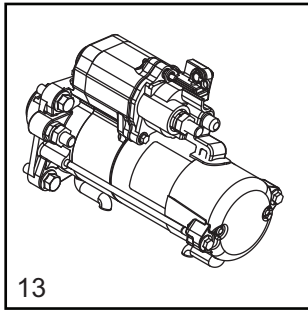
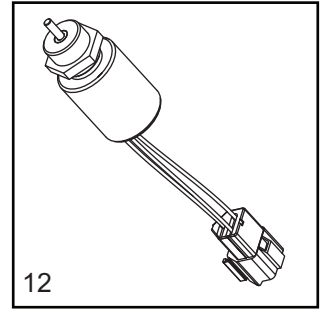
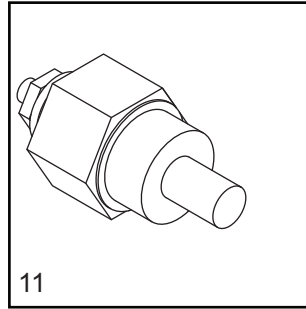
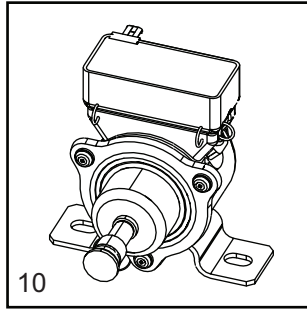
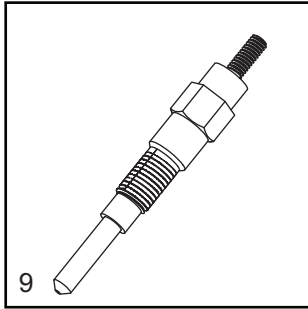
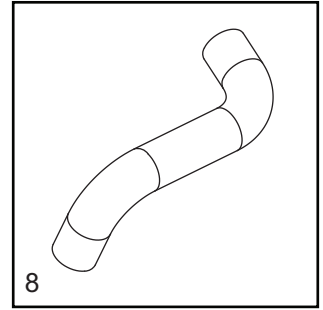
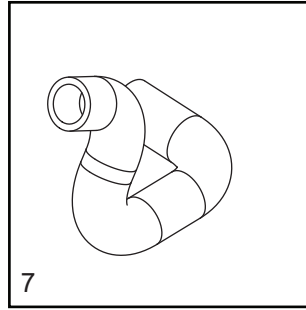
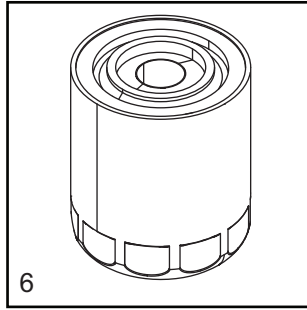
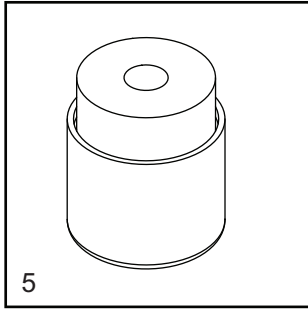
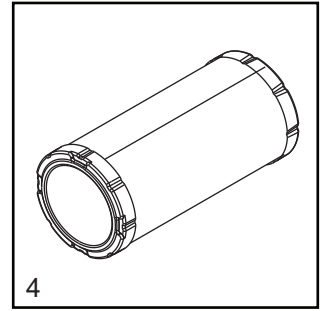
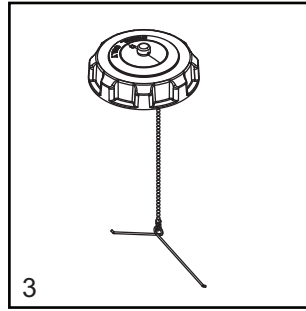
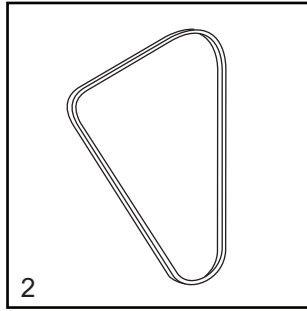
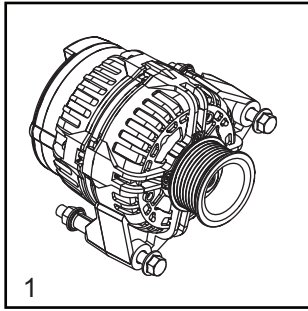
ENGINE

1. Alternator	16743
2. Cap, fuel tank with lanyard	16326
3. Filter, air (element).....	16444
4. Belt	10386
5. Filter, fuel, Mitsubishi	17647
6. Filter, oil, Mitsubishi (after break-in).....	10000014392
7. Hose, radiator - lower	16688SRV
8. Hose, radiator - upper.....	32383SRV
9. Plug, glow	16693
10. Pump, fuel	13278SRV
11. Sender, coolant temp	11590
12. Solenoid, fuel shutdown	16683
13. Starter	70232
14. Switch, coolant temperature	16678
15. Switch, oil pressure	16677

SERVICE KITS

16. 750 hour kit.....	SK334
Includes: Primary Air Filter 16444, Fuel Filter Element 17647 and Oil Filter 10000014392	
17. 3000 hour kit.....	SK335
Includes: Engine Belt 10388 (2), Air Filter16444 (4), Fuel Filter Element 17647(4), and Oil Filter 10000014392 (4)	

RECOMMENDED SPARE PARTS - ENGINE AND SERVICE KITS - KUBOTA



RECOMMENDED SPARE PARTS - ENGINE AND SERVICE KITS - KUBOTA

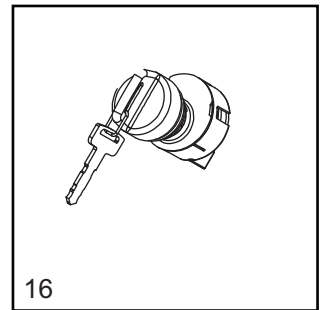
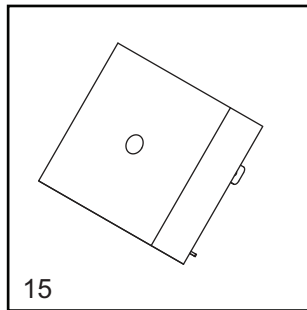
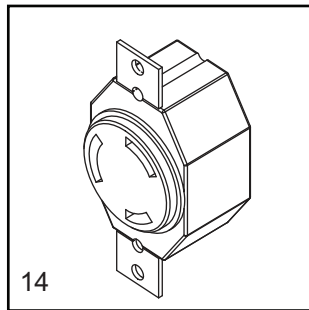
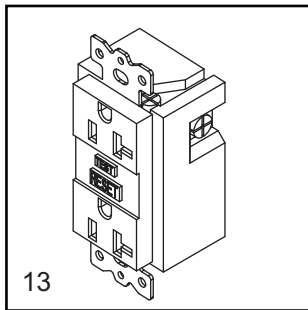
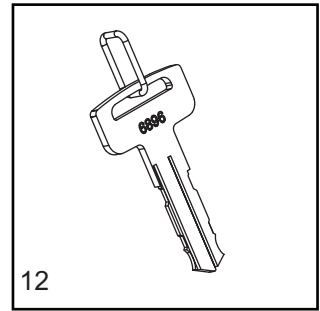
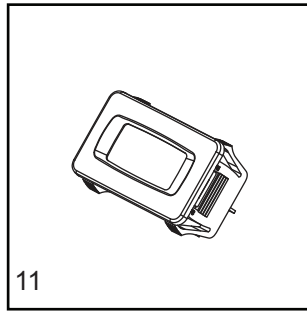
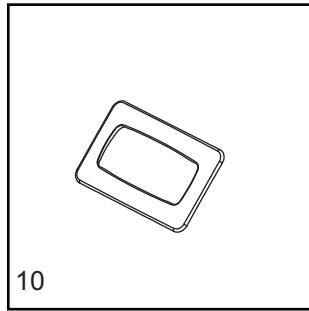
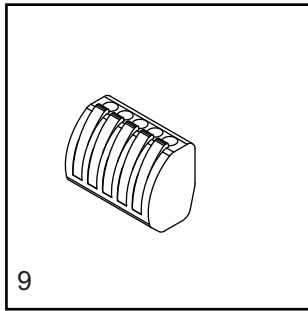
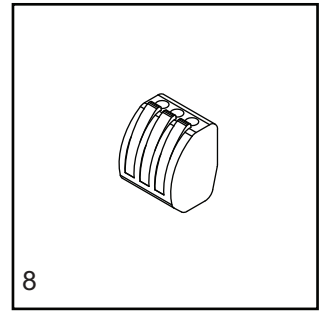
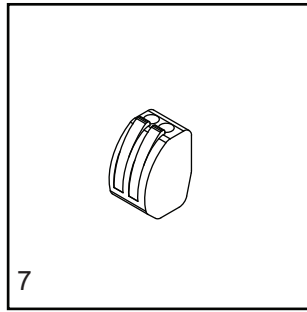
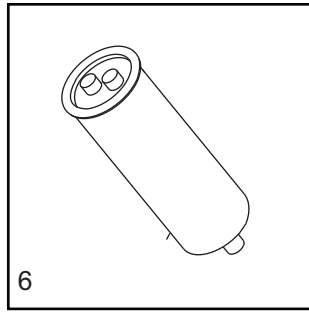
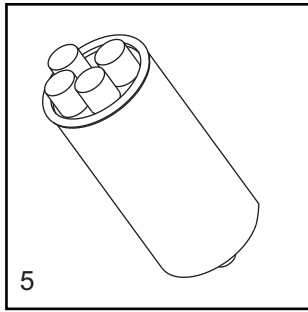
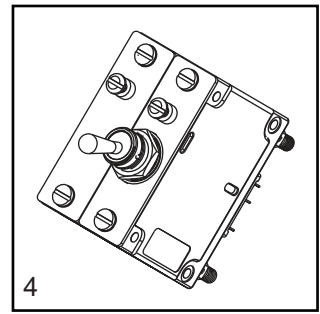
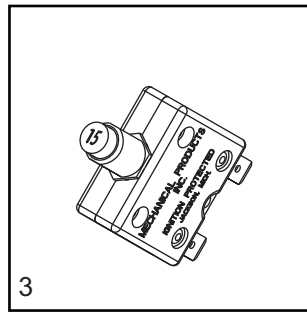
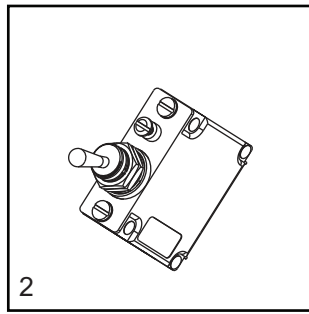
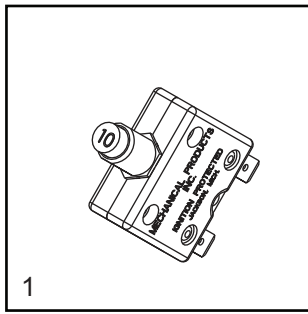
ENGINE

1. Alternator	12486
2. Belt, V, Kubota	11628
3. Cap, fuel tank with lanyard	16326
4. Filter, air (element).....	16444
5. Filter, fuel element, Kubota	13515
6. Filter, oil, Kubota D1005/D1105	10775
7. Hose, lower radiator, Kubota	12350
8. Hose, upper radiator Kubota	36977
9. Plug, glow, Kubota (start SN 489916)	13238
10. Pump, fuel	13278SRV
11. Sender, coolant temp	12873
12. Solenoid, fuel shutdown (2 wire)	13018
13. Starter- Kubota D850.....	30582
14. Switch, coolant temperature - Kubota D850	14099
15. Switch, oil pressure, Kubota D905	15375

SERVICE KITS

16. 500 hour kit.....	SK151
Includes: Air Filter Element 16444, Fuel Filter Element 13515 and Oil Filter 10775	
17. 2000 hour kit.....	SK152
Includes: Engine Belt 11628 (4), Air Filter Element 16444 (4), Fuel Filter Element 13515 (8), and Oil Filter 10775 (8)	

RECOMMENDED SPARE PARTS - ELECTRICAL

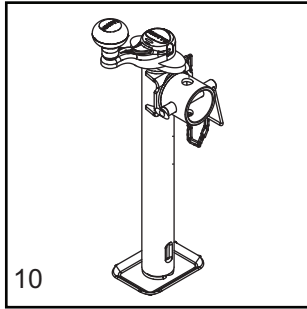
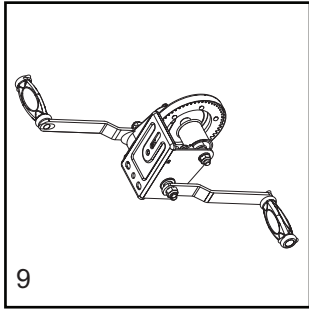
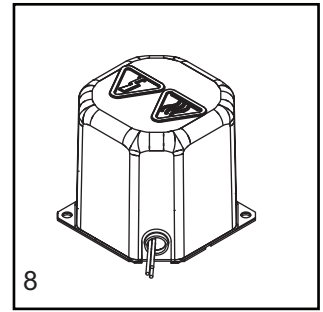
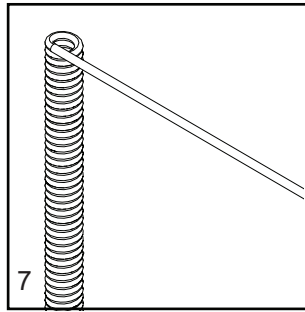
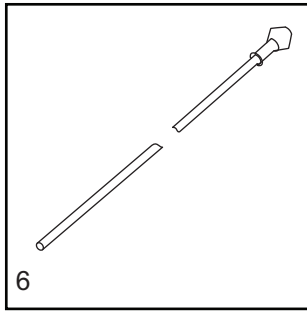
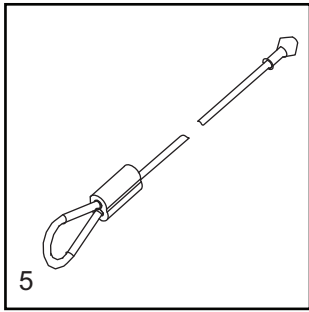
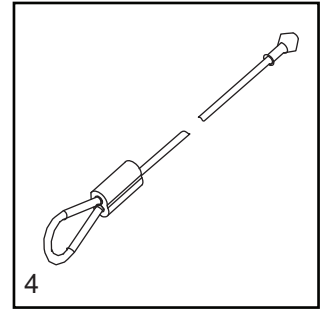
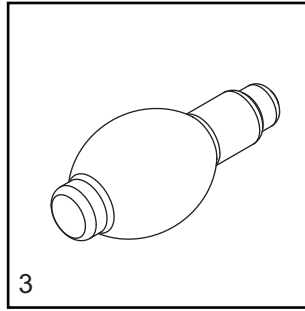
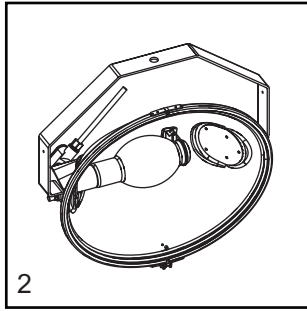
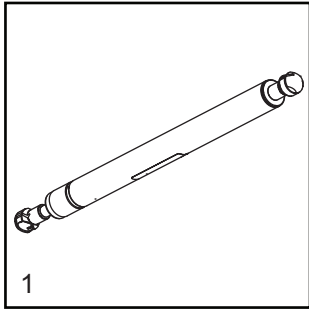


RECOMMENDED SPARE PARTS - ELECTRICAL

ELECTRICAL

1. Breaker, 10A, 240V, 1 pole, push button	36937
2. Switch, light 15A	36880
3. Breaker, 15A, 120V, 1 pole, push button, 8kW	36935
4. Breaker, 30A, 250A, 2 pole, 6kW	36975
5. Capacitor, 24 μ F, dual.....	65959
6. Capacitor, 25 μ F, 440V, 6kW	36980
7. Connector, 2 position (qty - 4)	66100
8. Connector, 3 position (qty - 2)	66101
9. Connector, 5 position (qty - 1)	66102
10. Gasket, hour meter	36944
11. Gauge, hour meter.....	36886
12. Key (set of two).....	37182
13. Receptacle, 120V/20A GFI	14130
14. Receptacle, 240V/30A twist.....	14137
15. Relay, 10A SPDT, 15 second time delay	14201
16. Switch, key	36882

RECOMMENDED SPARE PARTS - MISC



ENCLOSURE

1. Gas shock..... 35137

MAST

- 2. Assembly, light fixture, hard wired 1000008620
- 3. Bulb 1000008611
- 4. Cable, 79.75 in 31248
- 5. Cable, 78 in 31277
- 6. Cable, 144 in 31247
- 7. Coil cord 39650
- 8. Transformer (incl. cover)..... 10656SRV
- 9. Winch, manual, includes dual handle 72127

JACKS

10. Jack, top wind, 1200 lb 72126

Part No. 17974 Rev. C 01/05/2018

©2018 Generac Mobile Products, LLC
All rights reserved.

Specifications are subject to change without notice.
No reproduction allowed in any form without prior written consent
from Generac Mobile Products, LLC.

GENERAC

**MOBILE
PRODUCTS**

Generac Mobile Products, LLC
215 Power Drive, Berlin, WI 54923

GeneracMobileProducts.com | 800-926-9768 | 920-361-4442